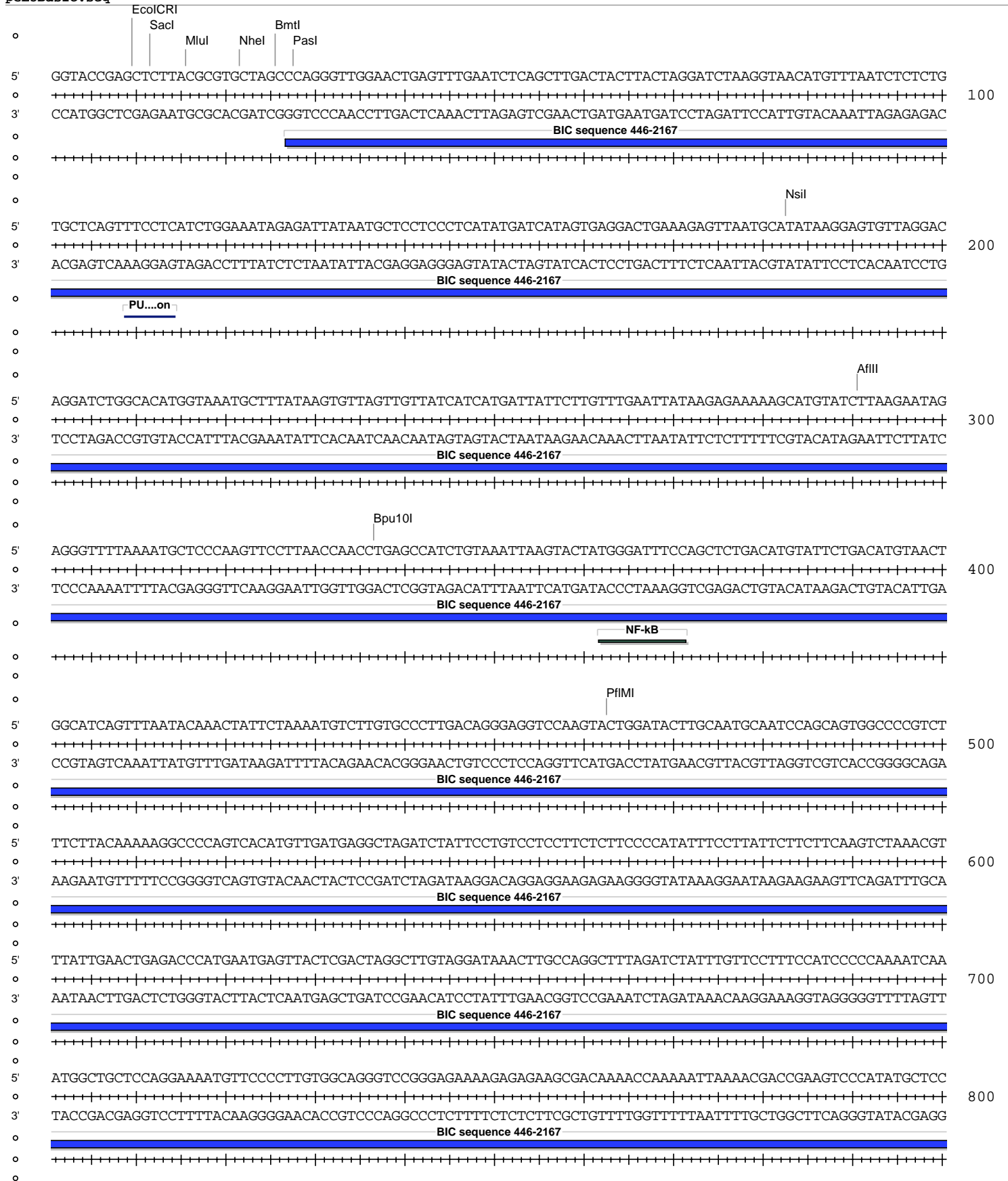
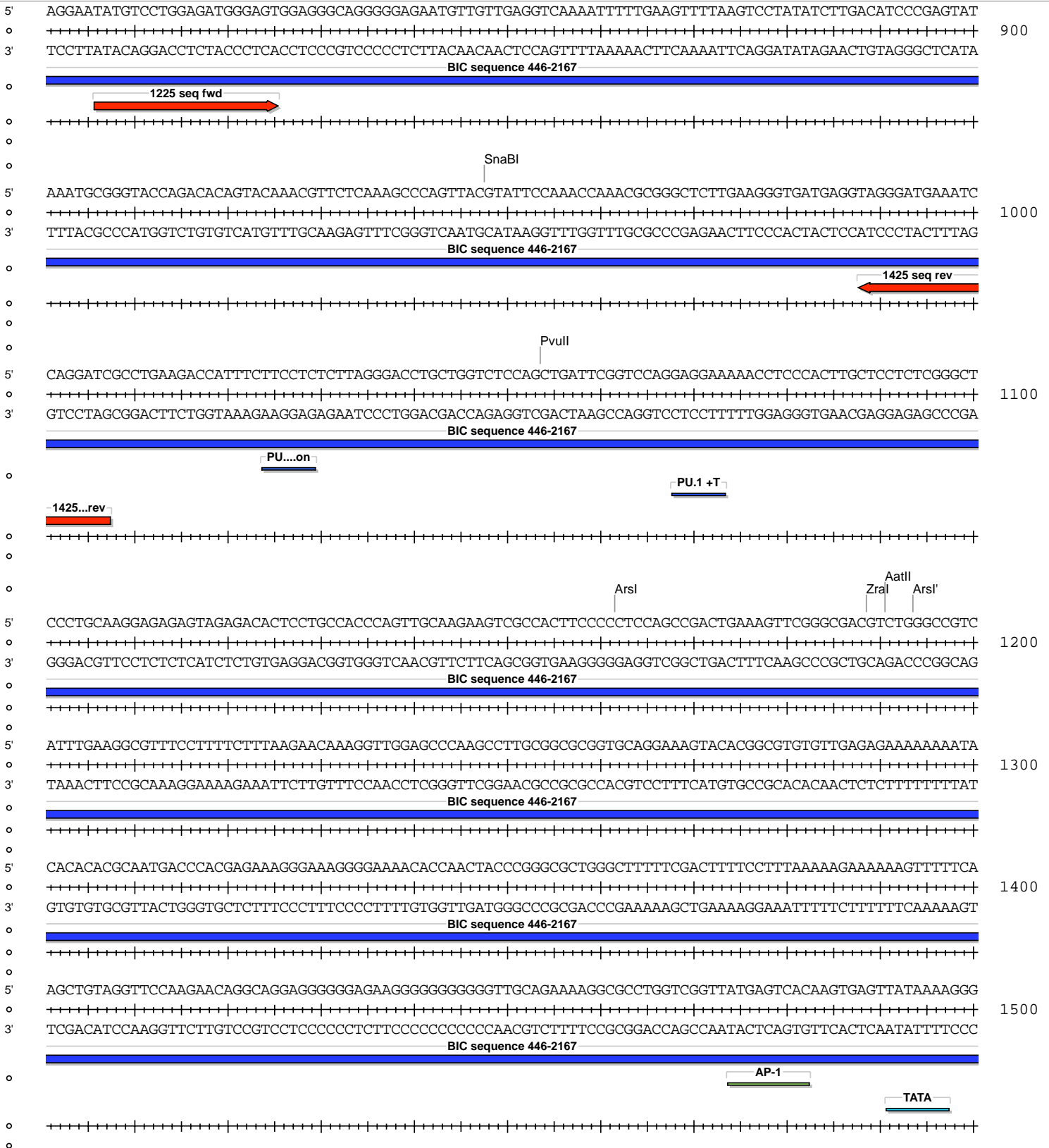
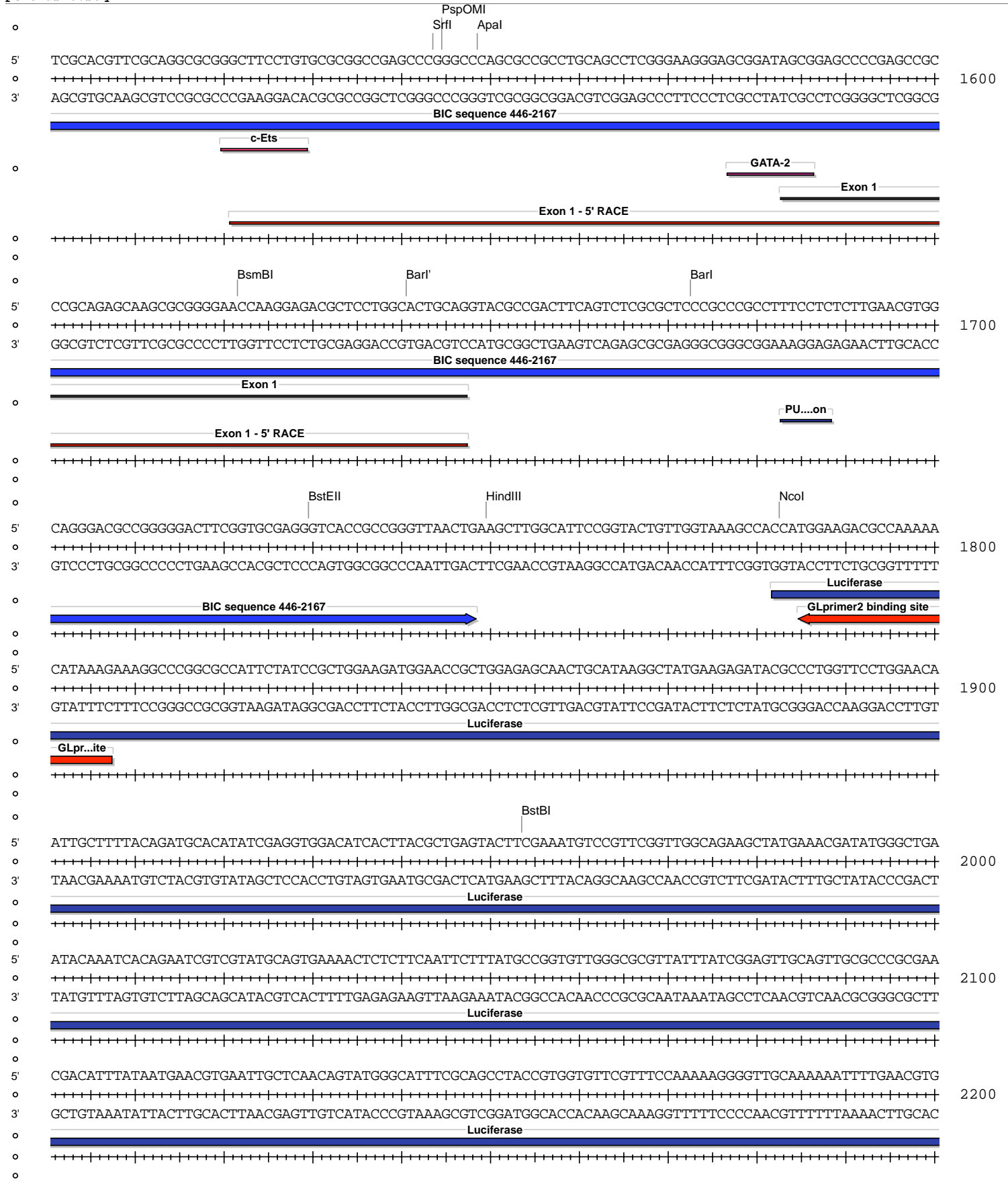


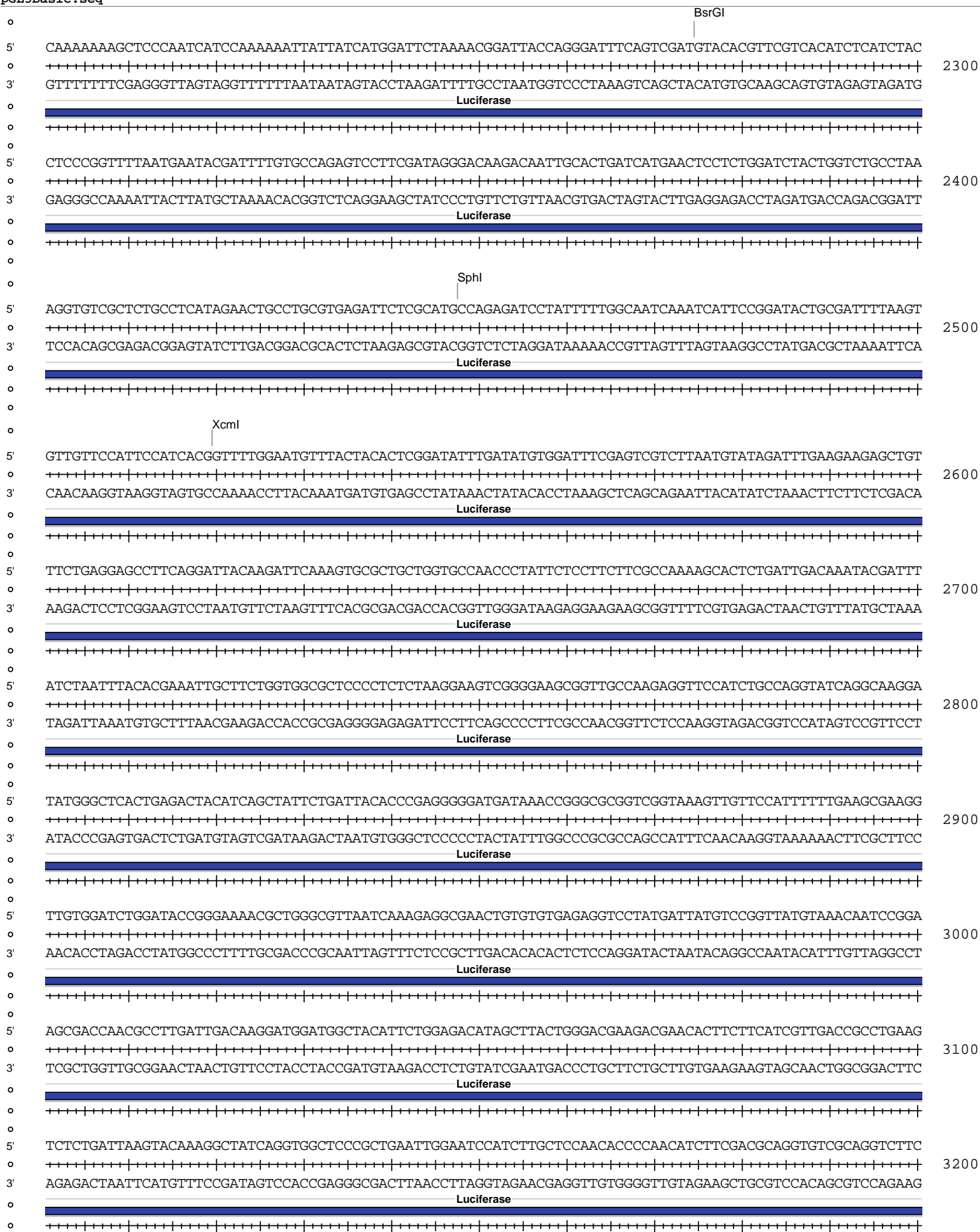
Absent Sites	0	AbsI,Agel,Ajul,Ajul',AleI,AlfI,AlfI',Ascl,AsiSI,AvrII,BaeI,BaeI',BbvCI,BIpl,BmgBI,BsiWI,BssHII,BstAPI,BstXI,BstZ17I,Bsu36I,CspCI,CspCI',EcoRI,EcoRV,Fall',Fall',FspAI,MauBI,MreI,MscI,NruI,Pacl,Pmel,PmlI,PspXI,Psrl,Psrl',RsrII,SacII,SanDI,Sbfl,SexAI,Sfil,SgrDI,SpeI,Stul,Swal,Tth111I,XhoI
AatII	1	1191 (6514)
Accl	1	3708 (6514)
Afel	1	3833 (6514)
AfII	1	291 (6514)
AhdI	1	4850 (6514)
Alol	1	6070 (6514)
Alol'	1	6038 (6514)
Apal	1	1549 (6514)
Arsl	1	1162 (6514)
Arsl'	1	1194 (6514)
AseI	1	5022 (6514)
BamHI	1	3701 (6514)
BarI	1	1673 (6514)
BarI'	1	1641 (6514)
BmtI	1	26 (6514)
Bpu10I	1	337 (6514)
BsaBI	1	3700 (6514)
BsmBI	1	1622 (6514)
BsrGI	1	2275 (6514)
BstBI	1	1954 (6514)
BstEII	1	1730 (6514)
BtgZI	1	5994 (6514)
EcoICRI	1	10 (6514)
FseI	1	3458 (6514)
HindIII	1	1750 (6514)
MluI	1	16 (6514)
NcoI	1	1783 (6514)
NheI	1	22 (6514)
NotI	1	6348 (6514)
NsiI	1	183 (6514)
PasI	1	28 (6514)
PfIMI	1	463 (6514)
PspOMI	1	1545 (6514)
PvuII	1	1054 (6514)
SacI	1	12 (6514)
Sall	1	3707 (6514)
SgrAI	1	3213 (6514)
SnaBI	1	948 (6514)
SphI	1	2448 (6514)
SrfI	1	1544 (6514)
TstI	1	3348 (6514)
TstI'	1	3316 (6514)
XbaI	1	3439 (6514)
XcmI	1	2520 (6514)
ZraI	1	1189 (6514)

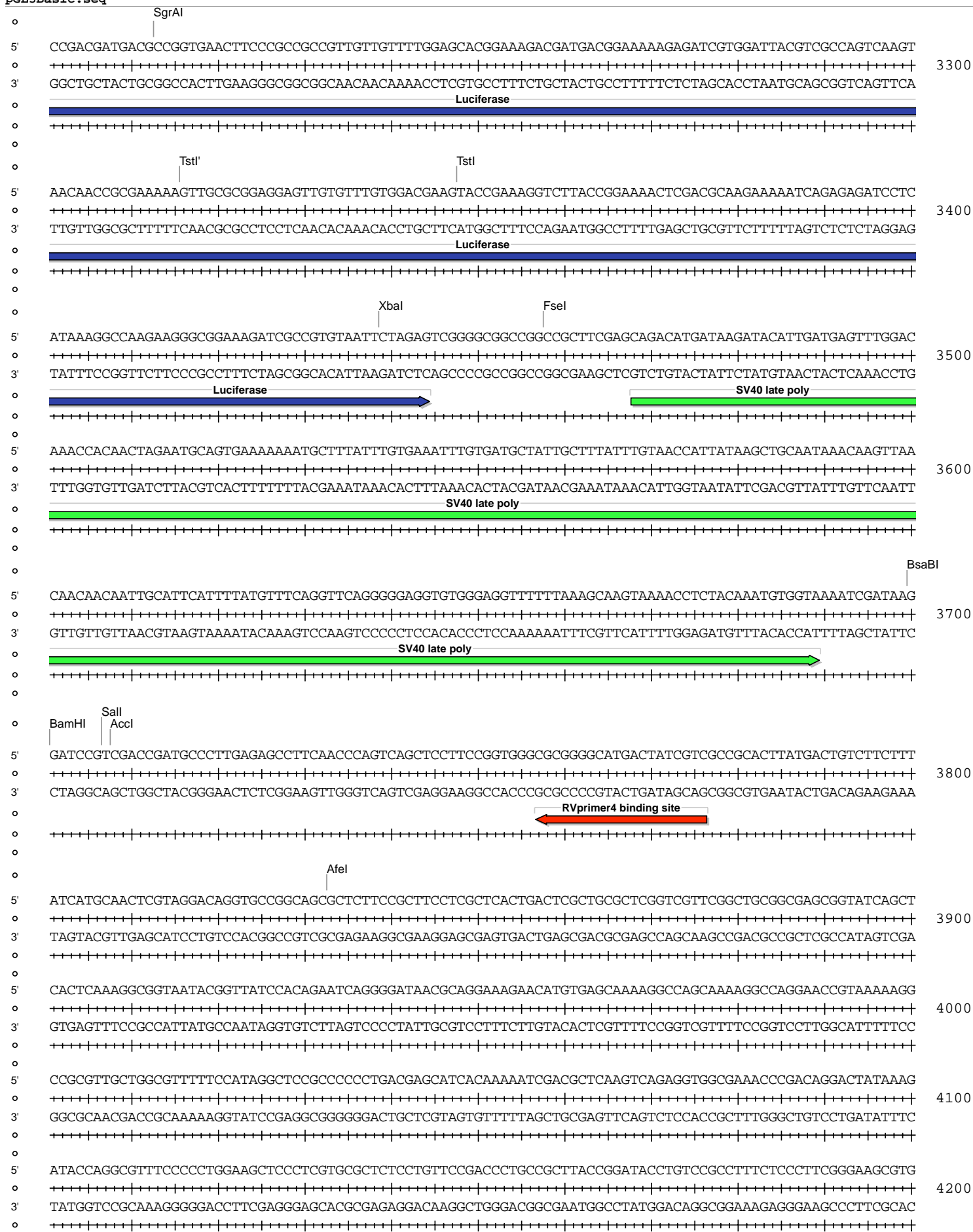


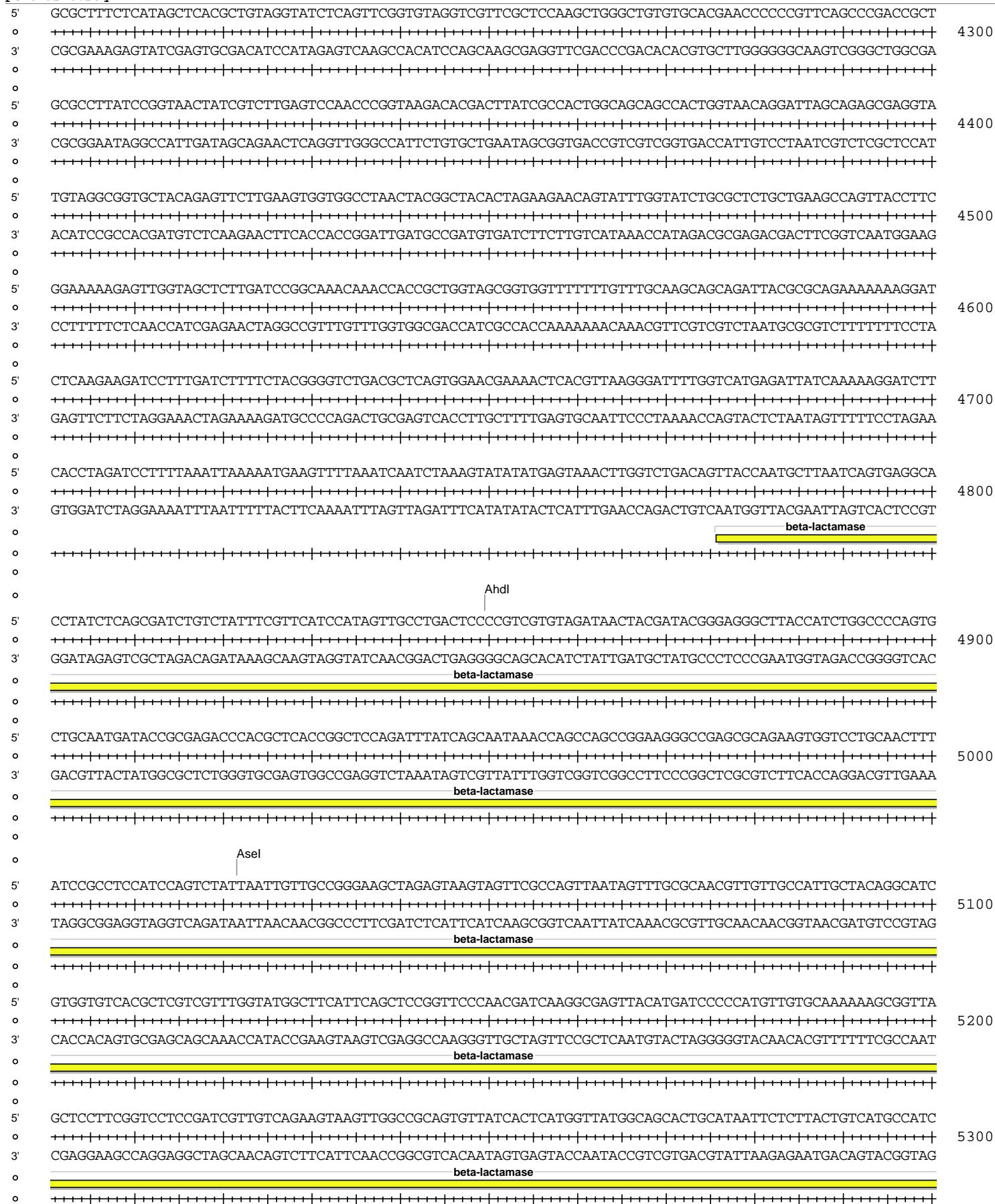
pGL3Basic.seq











pGL3Basic.seq

