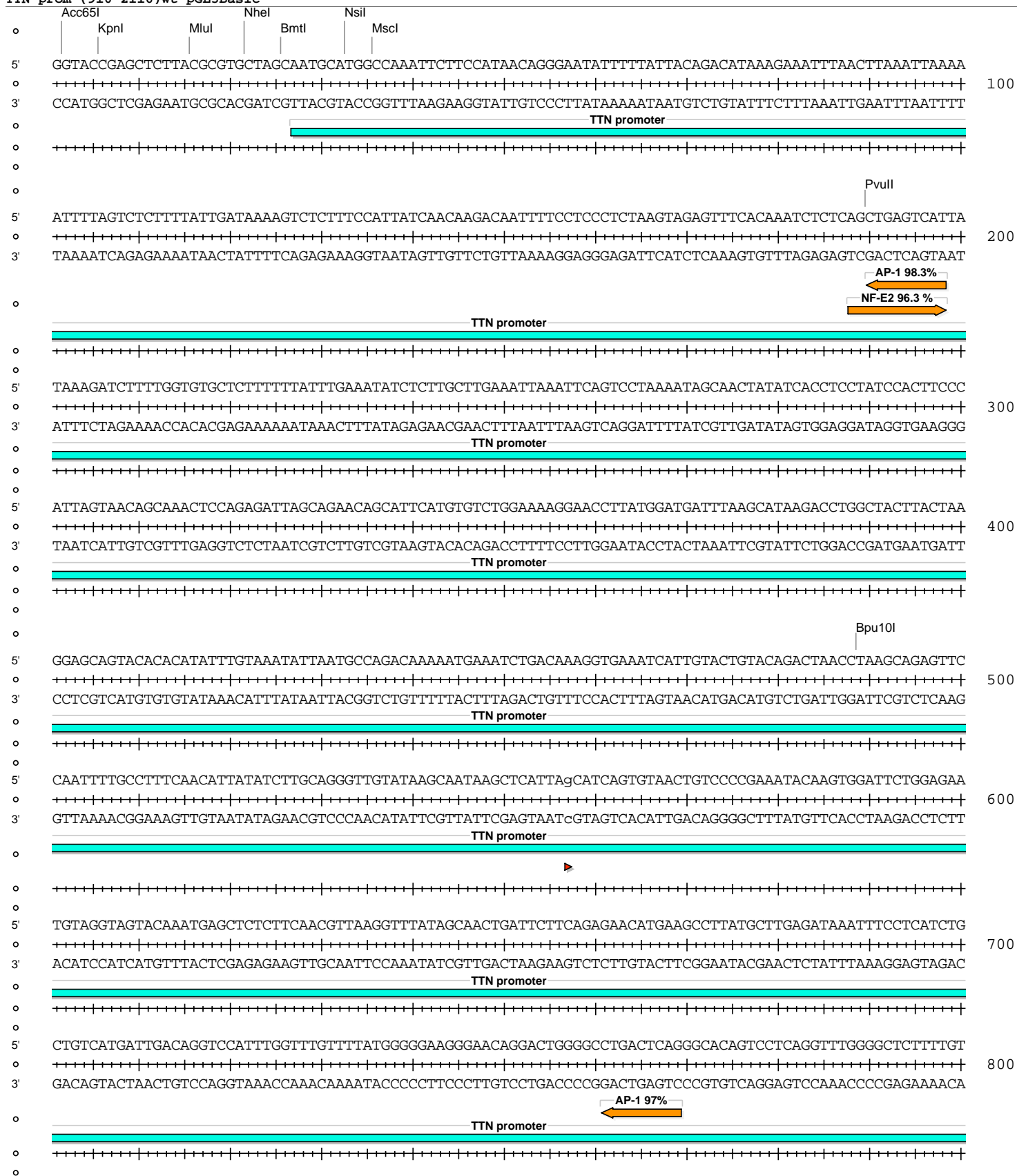
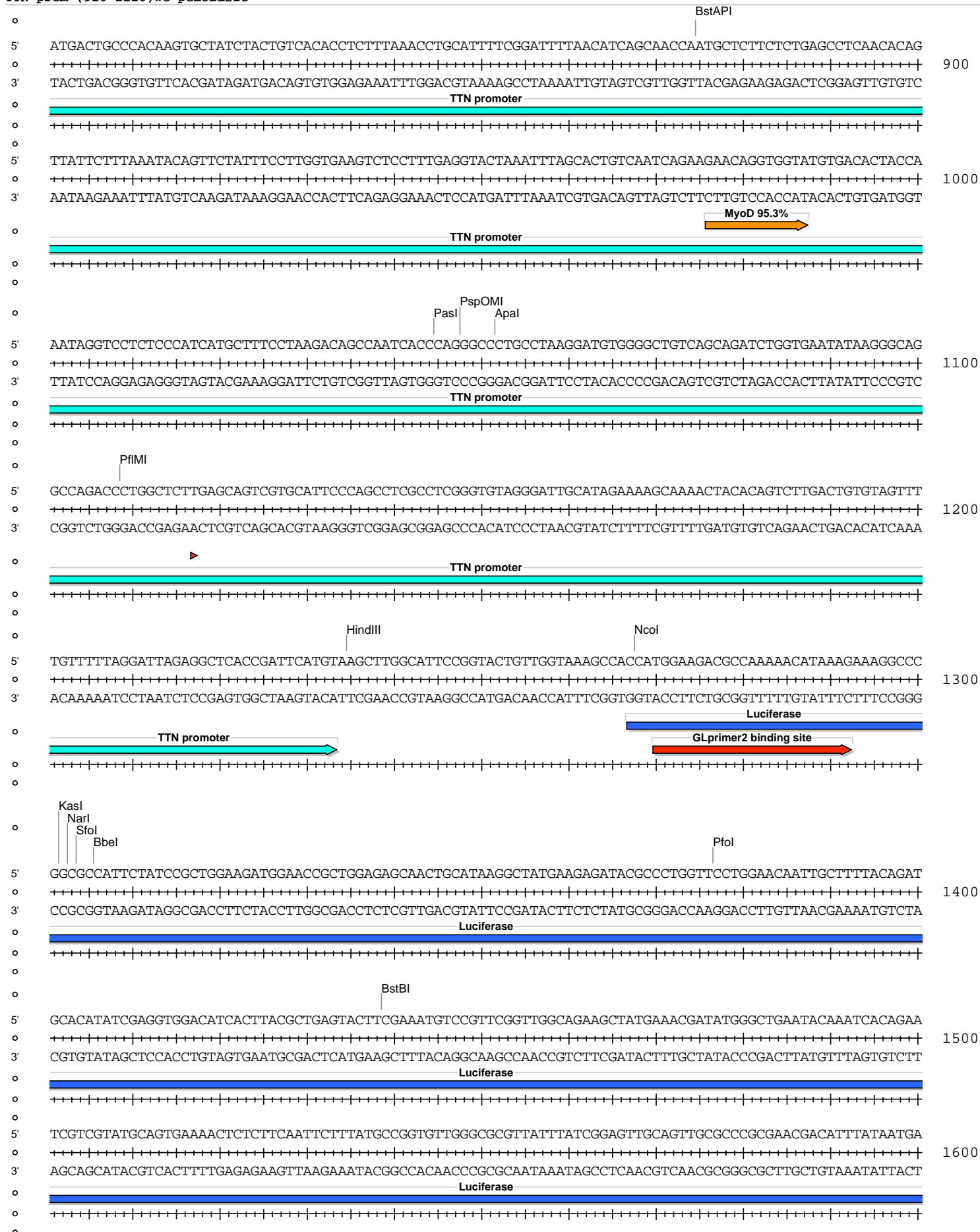


Absent Sites	0	AatII, AbsI, AfIII, AgeI, AjuI, AjuI', AleI, AlfI, AlfI', Arsi, Arsi', AscI, AsiSI, AvrII, BaeI, BaeI', BarI, BarI', BbvCI, BplI, BmgBI, BsiWI, BsmBI, BssHII, BstEII, BstXI, BstZ171, CspCI, CspCI', EcoRI, EcoRV, Fall, Fall', FspAI, MauBI, MreI, NdeI, NruI, PacI, PmeI, PmlI, PspXI, PspXI', PstI, RsrII, SacII, SanDI, SbfI, SexAI, SfiI, SgrDI, SmaI, SnaBI, SpeI, SrfI, StuI, SwaI, Tth111I, XhoI, XmaI, ZraI
Acc65I	1	2
AccI	1	3193
AfeI	1	3318
AhdI	1	4335
Alol	1	5555
Alol'	1	5523
ApaI	1	1052
BamHI	1	3186
BbeI	1	1306
BclI	1	1850
BmtI	1	26
Bpu10I	1	489
BsaAI	1	5484
BsaBI	1	3185
BsaI	1	4396
BsgI	1	5991
BstAPI	1	875
BstBI	1	1439
BtgZI	1	5479
DraIII	1	5487
FseI	1	2943
HindIII	1	1235
HpaI	1	3084
KasI	1	1302
KpnI	1	6
MluI	1	16
MscI	1	36
NarI	1	1303
NcoI	1	1268
NheI	1	22
NmeAIII	1	4484
NotI	1	5833
NsiI	1	33
PasI	1	1045
PciI	1	3442
PfIMI	1	1109
PfoI	1	1377
PshAI	1	3257
PspOMI	1	1048
PvuII	1	190
SalI	1	3192
SfoI	1	1304
SgrAI	1	2698
SphI	1	1933
XbaI	1	2924
XcmI	1	2005
XmnI	1	4934





5' ACGTGAATTGCTCAACAGTATGGGCATTTCGCAGCCTACCGTGGTGTTCGTTTCCAAAAAGGGGTTCGAAAAATTTTGAACGTGCAAAAAAGCTCCCA
+ 1700
3' TGCACTTAACGAGTTGTCATACCCGTAAGCGTCGGATGGCACCACAAGCAAAGGTTTTTCCCAACGTTTTTTAAACTTGCACGTTTTTTTCGAGGGT
Luciferase

5' ATCATCCAAAAATTATTATCATGGATCTAAAACGGATTACCAGGGATTTCAGTCGATGTACACGTTTCGTACATCTCATCTACCTCCCGGTTTTAATG
+ 1800
3' TAGTAGGTTTTTTAATAATAGTACCTAAGATTTTGCCTAATGGTCCCTAAAGTCAGTACATGTGCAAGCAGTGTAGAGTAGATGGAGGGCCAAAATTAC
Luciferase

BclI
5' AATACGATTTTGTGCCAGAGTCTTCGATAGGGACAAGACAATTGCACATGATCATGAACTCCTCTGGATCTACTGGTCTGCCTAAAGGTGTCGCTCTGCC
+ 1900
3' TTATGCTAAAACACGGTCTCAGGAAGCTATCCCTGTTCTGTTAACGTGACTAGTACTTGAGGAGACCTAGATGACCAGACGGATTTCCACAGCGAGACGG
Luciferase

SphI
5' TCATAGAAGTGCCTGCGTGAGATTCTCGCATGCCAGAGATCCTATTTTGGCAATCAAATCATTCCGGATACTGCGATTTTAAGTGTGTTCCATTCCAT
+ 2000
3' AGTACTTTGACGGACGCACTTAAGAGCGTACGGTCTCTAGGATAAAAACCGTTAGTTTAGTAAGGCCTATGACGCTAAAATTACAACAAGGTAAGGTA
Luciferase

XcmI
5' CACGGTTTTTGGAAATGTTTACTACACTCGGATATTTGATATGTGGATTTTCGAGTCGTCTTAATGTATAGATTTGAAGAAGAGCTGTTTCTGAGGAGCCTTC
+ 2100
3' GTGCCAAAACCTTACAATGATGTGAGCCTATAAACTATACACCTAAAGCTCAGCAGAATTACATATCTAAACTTCTTCTCGACAAAGACTCCTCGGAAG
Luciferase

5' AGGATTACAAGATTCAAAGTGCCTGCTGGTGCCAACCTATTCTCCTTCTTCGCCAAAAGCACTCTGATTGACAAATACGATTTATCTAATTTACACGA
+ 2200
3' TCCTAATGTTCTAAGTTTACGCGACGACCACGGTTGGGATAAGAGGAAGAAGCGGTTTTTCGTGAGACTAACTGTTTATGCTAAATAGATTAAATGTGCT
Luciferase

5' AATTGCTTCTGGTGGCGCTCCCCTCTTAAGGAAGTCGGGAAGCGGTTGCCAAGAGGTTCCATCTGCCAGGTATCAGGCAAGGATATGGGCTCACTGAG
+ 2300
3' TTAACGAAGACCACCGAGGGGAGAGATTCTTCAGCCCTTCGCCAACGGTTCTCCAAGGTAGACGGTCCATAGTCCGTTCTTATACCCGAGTGACTC
Luciferase

5' ACTACATCAGCTATTCTGATTACACCCGAGGGGATGATAAACCGGGCGCGGTTCGTTAAAGTTGTTCCATTTTTTGAAGCGAAGGTTGTGGATCTGGATA
+ 2400
3' TGATGTAGTCGATAAGACTAATGTGGGCTCCCCCTACTATTTGGCCCGCGCCAGCCATTTCAACAAGGTAAAAAATTCGCTTCCAACACCTAGACCTAT
Luciferase

5' CCGGAAAACGCTGGGCGTTAATCAAAGAGGCGAACTGTGTGTGAGAGGTCCTATGATTATGTCCGGTTATGTAAACAATCCGGAAGCGACCAACGCCTT
+ 2500
3' GGCCCTTTTGCACCCGCAATTAGTTTCTCCGCTTGACACACACTCTCCAGGATACTAATACAGGCCAATACATTTGTTAGGCCTTCGCTGGTTGCGGAA
Luciferase

5' GATTGACAAGGATGGATGGCTACATTCTGGAGACATAGCTTACTGGGACGAAGACGAACACTTCTTCATCGTTGACCGCTGAAGTCTCTGATTAAGTAC
+ 2600
3' CTAAGTGTCTACCTACCGATGTAAGACCTCTGTATCGAATGACCTGCTTCTGCTTGTGAAGAAGTAGCAACTGGCGGACTTCAGAGACTAATTCATG
Luciferase

