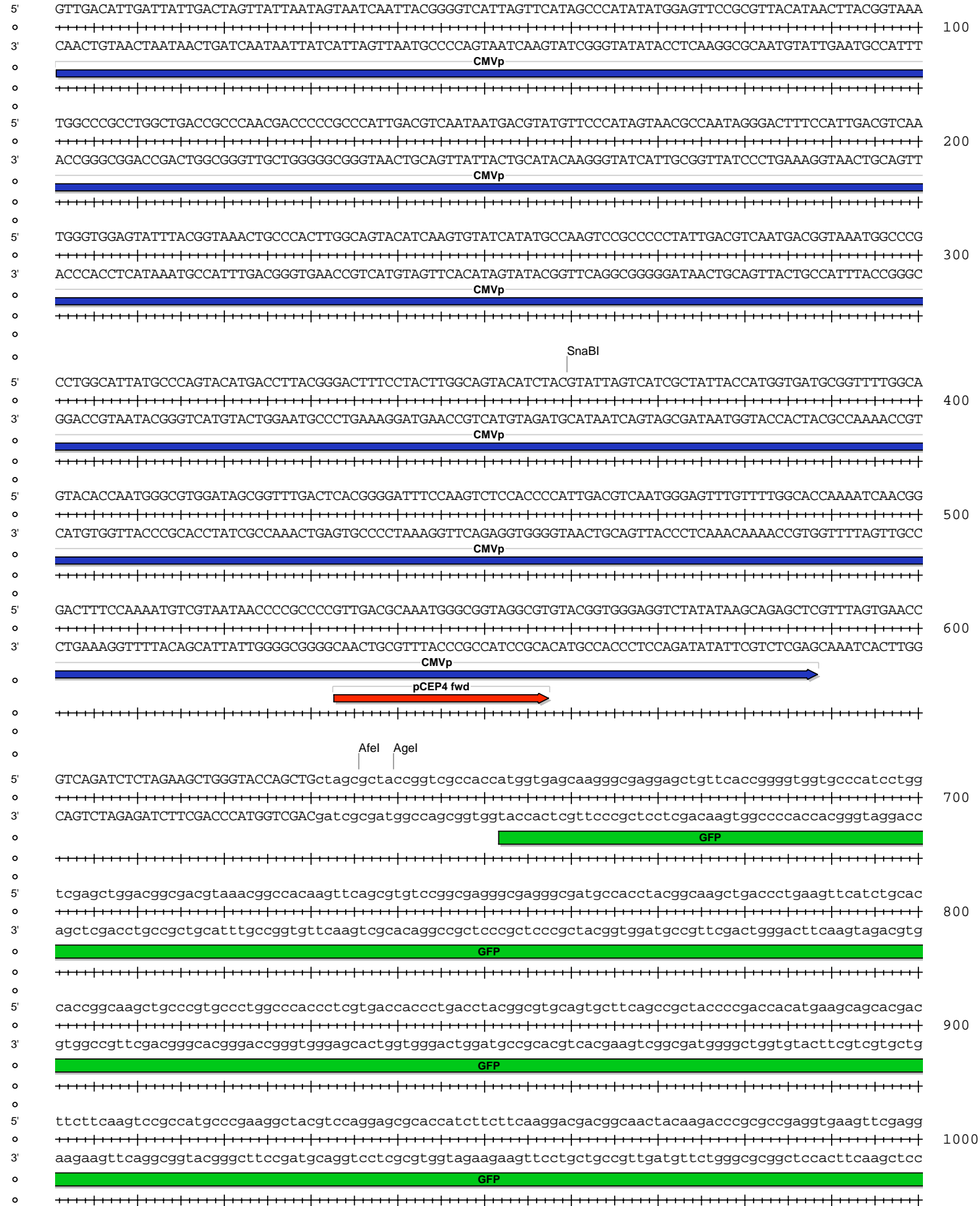


pCEP4-GFP-BART7-14

Absent Sites	0	AarI,AbstI,AfIII,AscI,BarI,BarI',BsiWI,BssHII,BstZ171,FseI,FspAI,MauBI,MreI,NotI,NgoMIV,Pacl,PmeI,PmlI,Psrl,Psrl',SapI,SbfI,SgrDI,SrfI,Swal
AfeI	1	636
AgeI	1	640
AjuI	1	12297
AjuI'	1	12265
AsiSI	1	11948
BaeI	1	5316
BaeI'	1	5283
BbeI	1	3473
BbvCI	1	7002
BclI	1	2491
BlpI	1	2560
BstBI	1	11435
EcoNI	1	9037
EcoRV	1	4836
HindIII	1	3282
KasI	1	3469
NarI	1	3470
NotI	1	1373
NruI	1	11134
PshAI	1	11611
PspXI	1	2671
SexAI	1	6561
SfiI	1	1545
SfoI	1	3471
SgrAI	1	7203
SnaBI	1	360
XhoI	1	2671

pCEP4-GFP-BART7-14



pCEP4-GFP-BART7-14



pCEP4-GFP-BART7-14

5' gt cacaatctatggggctgtagacagtggtgcttaccagacttccatggaagatgtgaatttgctgctagctatatgggtgggtgctatgggctccctaggg
 1900
 3' cagtgttagataccccagcatctgtcacacgaatggtctgaaggtaccttctacacttaaacgacgatcgataaccaccacgataccggaggatccc

BART cluster 2 full length

miR-BART8*

miR-BART8 stem loop

5' actcatgtagtaggggcttctgtgatagctaataatgaatgtggcagctggtgttggactggaccctgaattggaacagtaacttggattctgtaacacttca
 2000
 3' tgagtacatcaccocgaaacactatcgattacttacaccgctcgacaacaaacatgacctgggactaaccttctgattgaacctaaagacattgtgaagt

BART cluster 2 full length

miR-BART9 stem loop

miR-BART9

miR-BART9*

5' tgggtcccgtagtgacaactatgctgaatatcttgaatatgggaggagggggcttgggttccattgtgtgccttctcctggccaacgtgagggctcta
 2100
 3' acccagggcatcactggtgatacagacttatagaacttataccctcctcccccgaaaccaaggtaacacacgggaaggaccggtgcaactccaggat

BART cluster 2 full length

miR-BART9 stem loop

miR-BART9

5' gtgttataggcgtggcagtttcttgagggctaataaccgggtgaggcgggtgtcacagggtgtagaccctggagtgaaccagtagcactcggttac
 2200
 3' cacaatatcccgaccgtcaaagaactccgattattgggcccactccgccaacagtgccacgatctgggacctcaacttggatcgtgagccaatg

BART cluster 2 full length

e...2

5' aaagtcaggtctagtagttgtgaccctgcaaagctacgtggggatgagcagccagggacttgggtgacaagcagacaggcggcgcattggaaccccag
 2300
 3' ttcagtagcagatcatcaacactgggacgtttcgatgcaccctactcgtcggctccctgaaccaactgttcgtctgtccgcccgtaaccttggggctc

BART cluster 2 full length

ebv-mir-BART22

5' aggagtgcccggggccacctcttgggtctgtacatattttgtattgtacataacctggagttggctgtggtgactccatctggaaggggctgg
 2400
 3' tctcacagggccccgggtggagaaaccaagacatgtataaaacaataacatgtattggtacctcaaccgacaccacgtgaggtagaccatcccccgacc

BART cluster 2 full length

miR-BART10

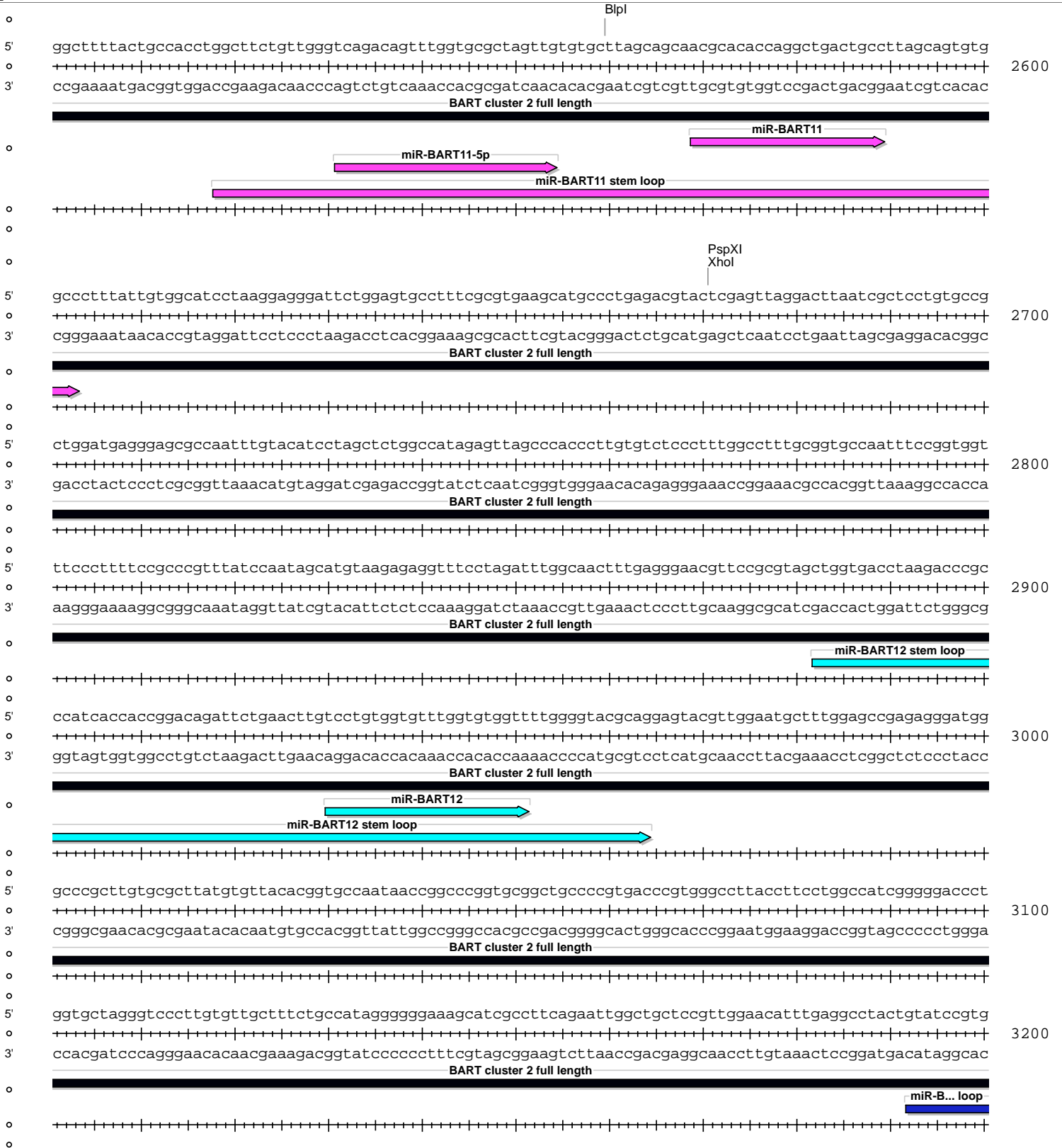
miR-BART10*

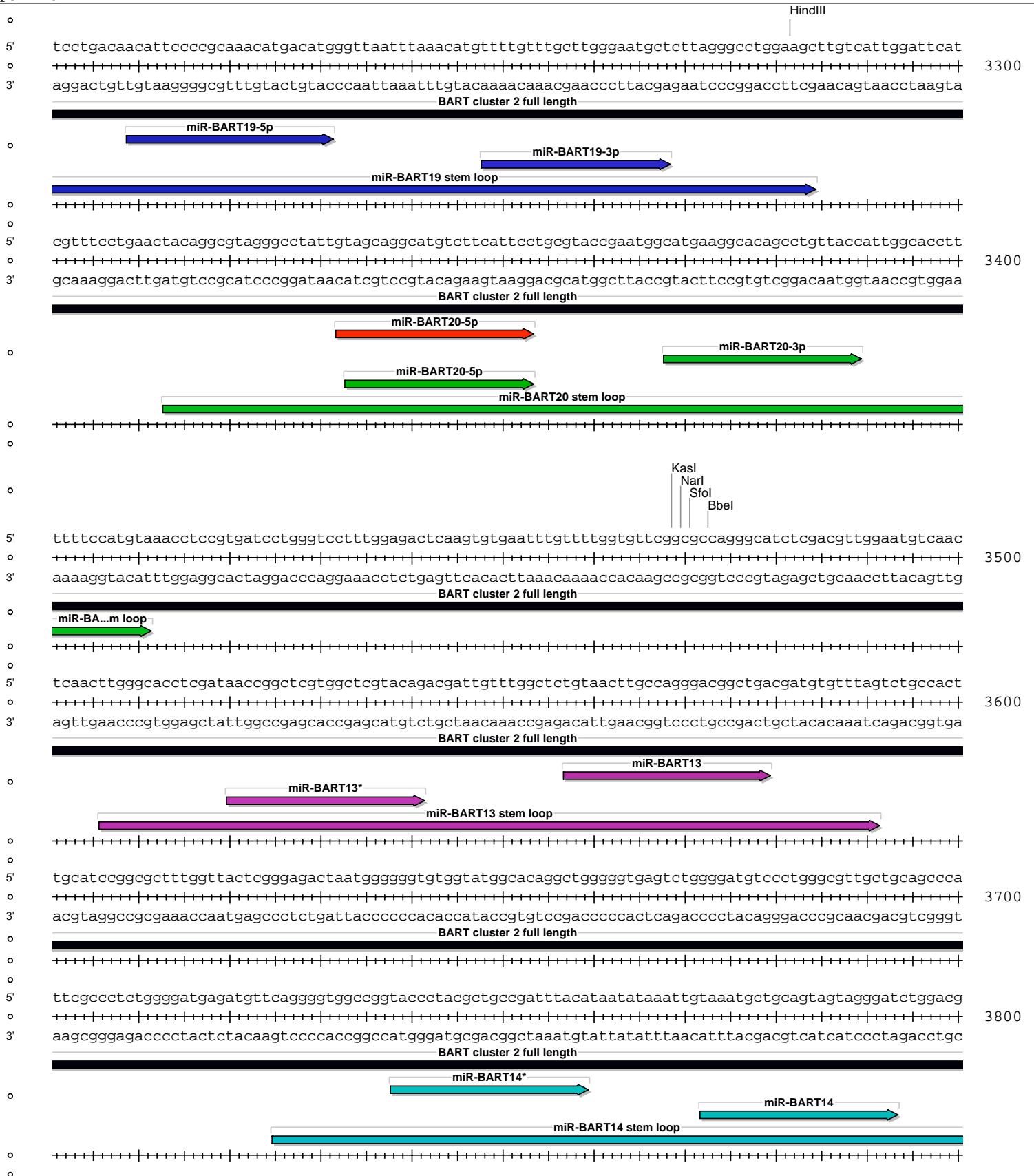
miR-BART10 stem loop

5' tgcggacgcctgtgttagtctatgccaatgtttacctgccttgggttactattccaaacgaccacaccttggaggacacctggagcctgatcatctc
 2500
 3' acgctcgggacacaaatcagatacggttacaaatggacggaacccaatgataaggtttgctggtgtgaaactcctgtggacctcgggactagtaagag

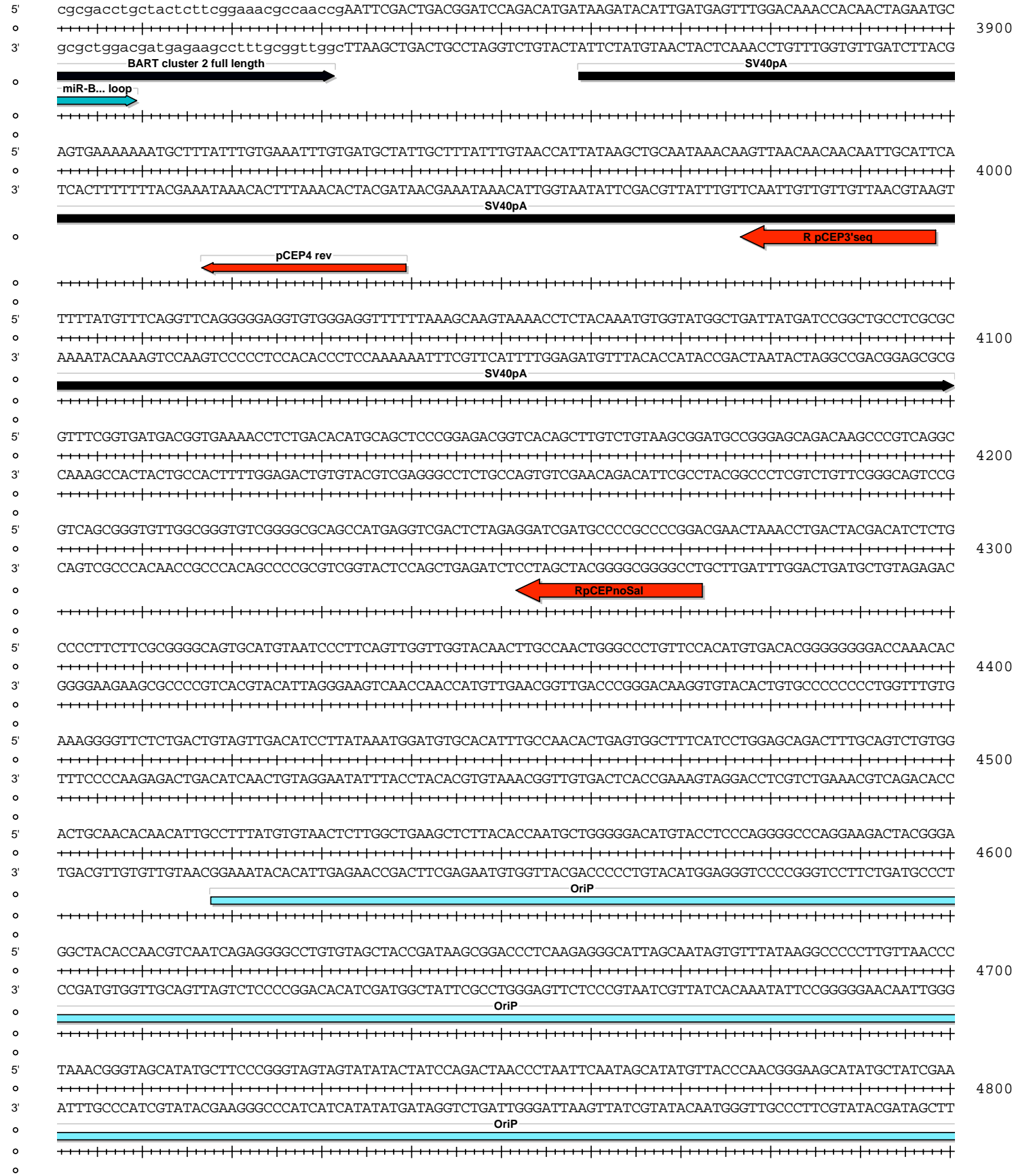
BART cluster 2 full length

Bcll

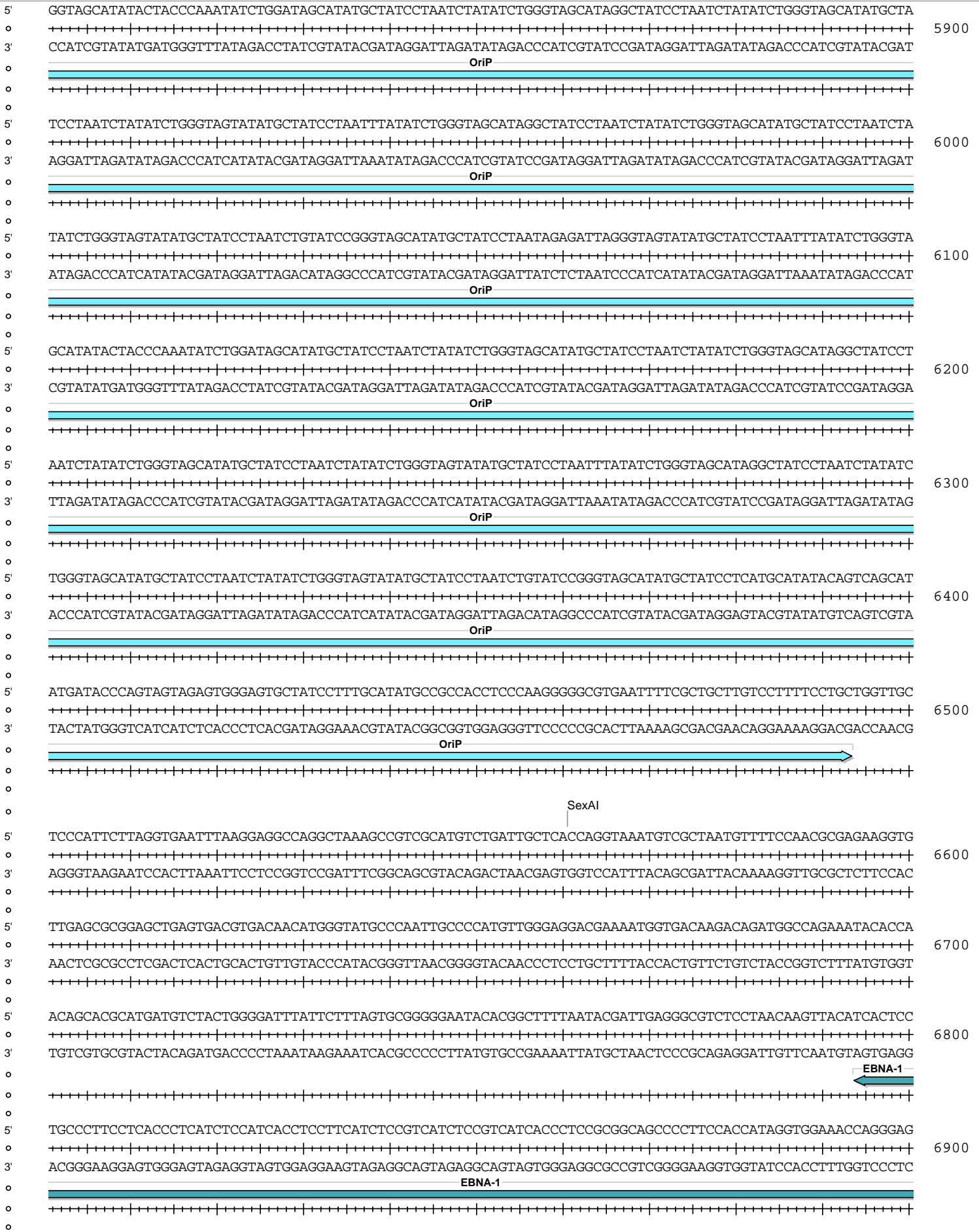




pCEP4-GFP-BART7-14



pCEP4-GFP-BART7-14



pCEP4-GFP-BART7-14

5' GCAAATCTACTCCATCGTCAAAGCTGCACACAGTCACCCTGATATTGCAGGTAGGAGCGGGCTTTGTCATAACAAGTCCTTAATCGCATCCTTCAAAC 7000
 +-----+-----+-----+-----+-----+-----+-----+-----+-----+-----+-----+-----+-----+-----+-----+
 3' CGTTTAGATGAGGTAGCAGTTTCGACGTGTGTCAGTGGGACTATAACGTCCTCGCCGAAACAGTATTGTTCCAGGAATTAGCGTAGGAAGTTTTC
 EBNA-1

BbvCI

5' CTCAGCAAATATATGAGTTTGTAAAAAGACCATGAAATAACAGACAATGGACTCCCTTAGCGGGCCAGGTGTGGGCCGGGTCCAGGGGCCATTCCAAAG 7100
 +-----+-----+-----+-----+-----+-----+-----+-----+-----+-----+-----+-----+-----+-----+-----+
 3' GAGTCGTTTATATACTCAAACATTTTCTGGTACTTTATTGTCTGTTTACCTGAGGGAATCGCCCGGTCCAACACCCGGCCAGGTCCCCGGTAAGGTTTC
 EBNA-1

SgrAI

5' GGGAGACGACTCAATGGTGTAAAGACGACATTTGTGGAATAGCAAGGGCAGTTCCTCGCCTTAGGTTGTAAAGGGAGGTCTTACTACCTCCATATACGAACA 7200
 +-----+-----+-----+-----+-----+-----+-----+-----+-----+-----+-----+-----+-----+-----+-----+
 3' CCCTCTGCTGAGTTACCACATTCGCTGTAACACCTTATCGTTCCCGTCAAGGAGCGGAATCCAACATTTCCCTCCAGAATGATGGAGGTATATGCTTGT
 EBNA-1

5' CACCGGCACCCCAAGTTCCTTCGTCGGTAGTCCTTTCTACGTGACTCCTAGCCAGGAGAGCTCTTAAACCTTCTGCAATGTTCTCAAATTTCCGGTTGGA 7300
 +-----+-----+-----+-----+-----+-----+-----+-----+-----+-----+-----+-----+-----+-----+-----+
 3' GTGGCCGTCGGTTCAAGGAAGCAGCCATCAGGAAAGATGCACTGAGGATCGGTCTCTCGAGAATTTGGAAGACGTTACAAGAGTTTAAAGCCCAACCT
 EBNA-1

5' ACCTCCTTGACCACGATGCTTTCCAAACCACCTCCTTTTTTGGCCTGCCTCCATCACCTTGACCCGGGGTCCAGTGCTTGGGCCCTTCTCCTGGGTCA 7400
 +-----+-----+-----+-----+-----+-----+-----+-----+-----+-----+-----+-----+-----+-----+-----+
 3' TGGAGGAACTGGTCTACGAAAGTTTGGTGGGAGGAAAAACCGCGGACGGAGTGTAGTGGGACTGGGGCCCGAGTACGAACCCGGAAGAGGACCCAGT
 EBNA-1

5' TCTGCGGGGCCCTGCTCTATCGCTCCCGGGGCACGTCAGGCTCACCATCTGGGCCACCTTCTTGGTGGTATTCAAATAATCGGCTTCCCTACAGGGT 7500
 +-----+-----+-----+-----+-----+-----+-----+-----+-----+-----+-----+-----+-----+-----+-----+
 3' AGACGCCCCGGGACGAGATAGCGAGGGCCCCGTCAGTCCGAGTGGTAGACCCGGTGAAGAACCACCATAAGTTTATTAGCCGAAGGGGATGTCCCA
 EBNA-1

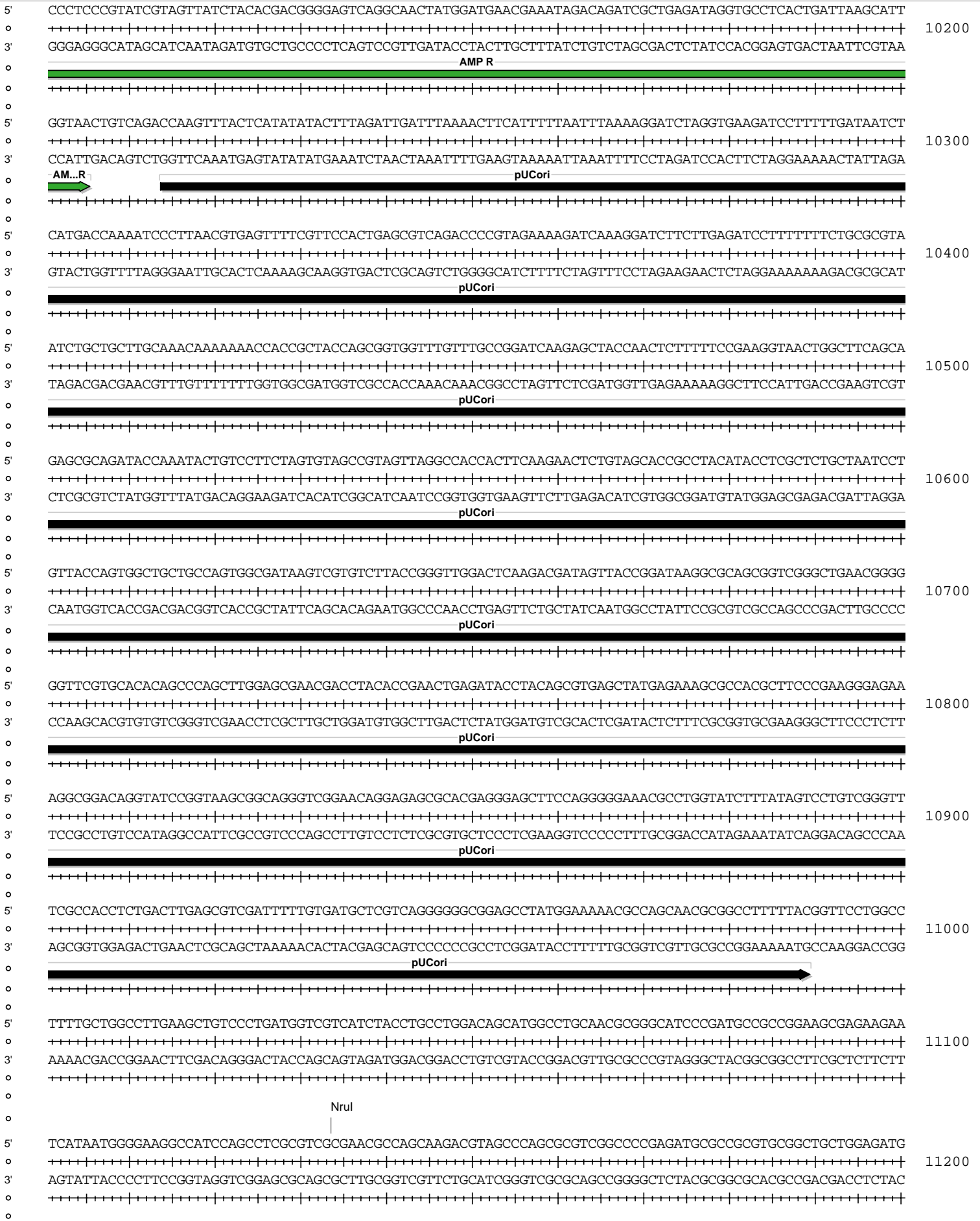
5' GGAAAAATGGCCTTCTACCTGGAGGGGCCCTGC CGGTGGAGACCCGGATGATGATGACTGACTACTGGGACTCCTGGGCCTCTTTTCTCCACGTCCACG 7600
 +-----+-----+-----+-----+-----+-----+-----+-----+-----+-----+-----+-----+-----+-----+-----+
 3' CCTTTTACC GGAAGATGGACCTCCCCGGACGCGCCACCTCTGGGCCTACTACTACTGACTGATGACCTGAGGACCCGGAGAAAAGAGGTGCAGGTGC
 EBNA-1

5' ACCTCTCCCCCTGGCTCTTTCACGACTTCCCCCTGGCTCTTTCACGTCTCTACCCGGCGGCCTCCACTACCTCCTCGACCCCGGCTCCACTACCT 7700
 +-----+-----+-----+-----+-----+-----+-----+-----+-----+-----+-----+-----+-----+-----+-----+
 3' TGGAGAGGGGGACCGAGAAAGTGTGAAGGGGGGACCGAGAAAGTGCAGGAGATGGGGCCCGGAGGTGATGGAGGAGCTGGGGCCGGAGGTGATGGA
 EBNA-1

5' CCTCGACCCCGGCTCCACTGCCTCCTCGACCCCGGCTCCACTCCTGCTCCTGCCCCCTCTGCTCCTGCCCCCTCCTCTGCTCCTGCCCTCCTGCC 7800
 +-----+-----+-----+-----+-----+-----+-----+-----+-----+-----+-----+-----+-----+-----+-----+
 3' GGAGCTGGGGCCGGAGGTGACGAGGAGCTGGGGCCGGAGGTGGAGGACGAGGACGGGGAGGACGAGGACGGGGAGGAGGACGAGGACGGGGAGGACGGG
 EBNA-1

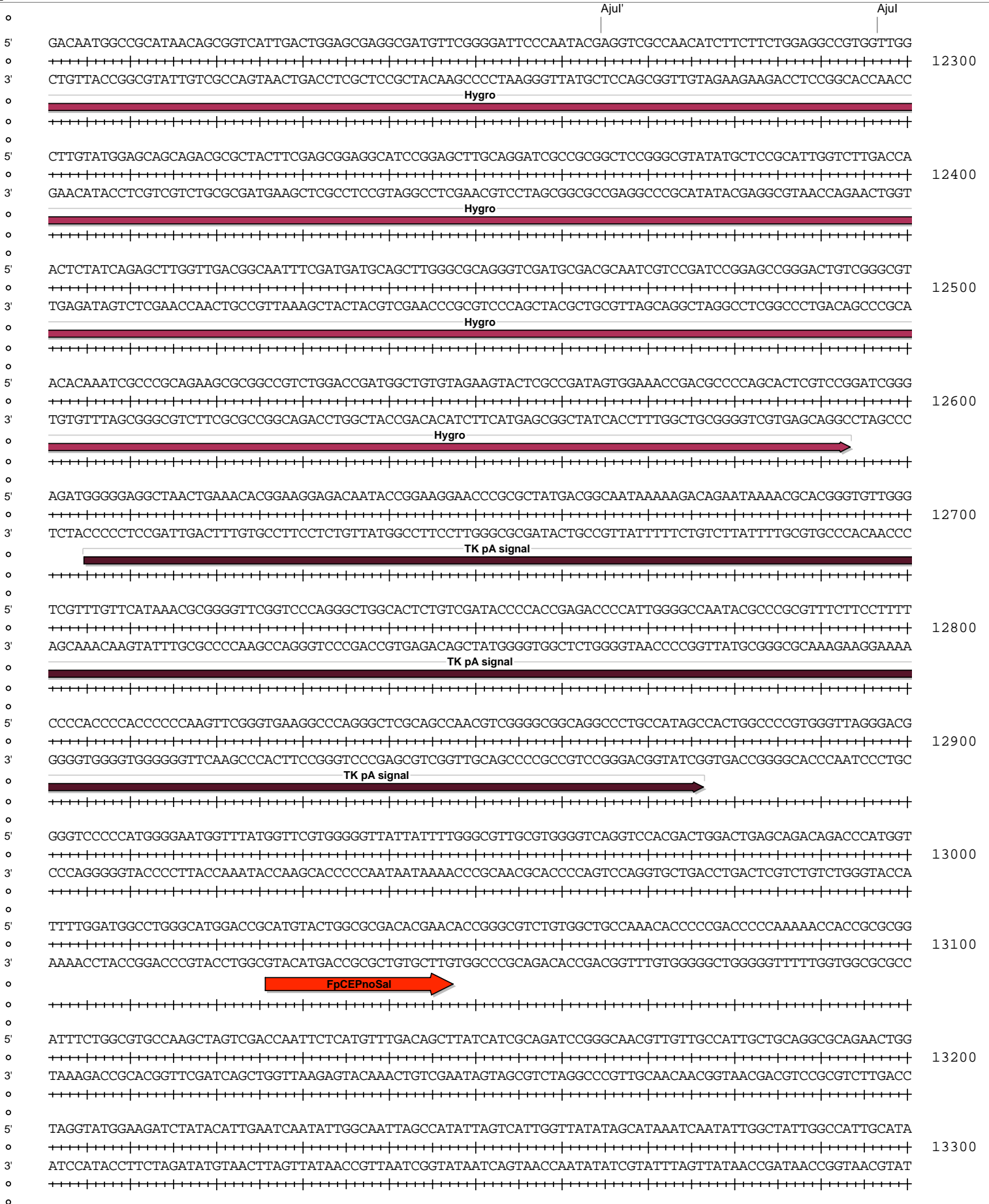
5' CTCTGCTCCTGCCCTCCTGCCCTCCTGCTCCTGCCCTCCTGCTCCTGCCCTCCTGCTCCTGCCCTCCTGCTCCTGCCCTCCTGCCCTCCTGCCCT 7900
 +-----+-----+-----+-----+-----+-----+-----+-----+-----+-----+-----+-----+-----+-----+-----+
 3' GAGGACGAGGACGGGGAGGACGGGGAGGACGAGGACGGGGAGGACGAGGACGGGGAGGACGAGGACGGGGAGGACGAGGACGGGGAGGACGGGG
 EBNA-1

pCEP4-GFP-BART7-14



pCEP4-GFP-BART7-14





pCEP4-GFP-BART7-14

5' CGTTGTATCTATATCATAATATGTACATTTATATTGGCTCATGTCCAATATGACCGCCAT
o ++++++|+++++|+++++|+++++|+++++|+++++|+++++|+++++|+++++|+++++|
3' GCAACATAGATATAGTATTATACATGTAAATATAACCGAGTACAGGTTATACTGGCGGTA
o ++++++|+++++|+++++|+++++|+++++|+++++|+++++|+++++|+++++|+++++|
o

13360