

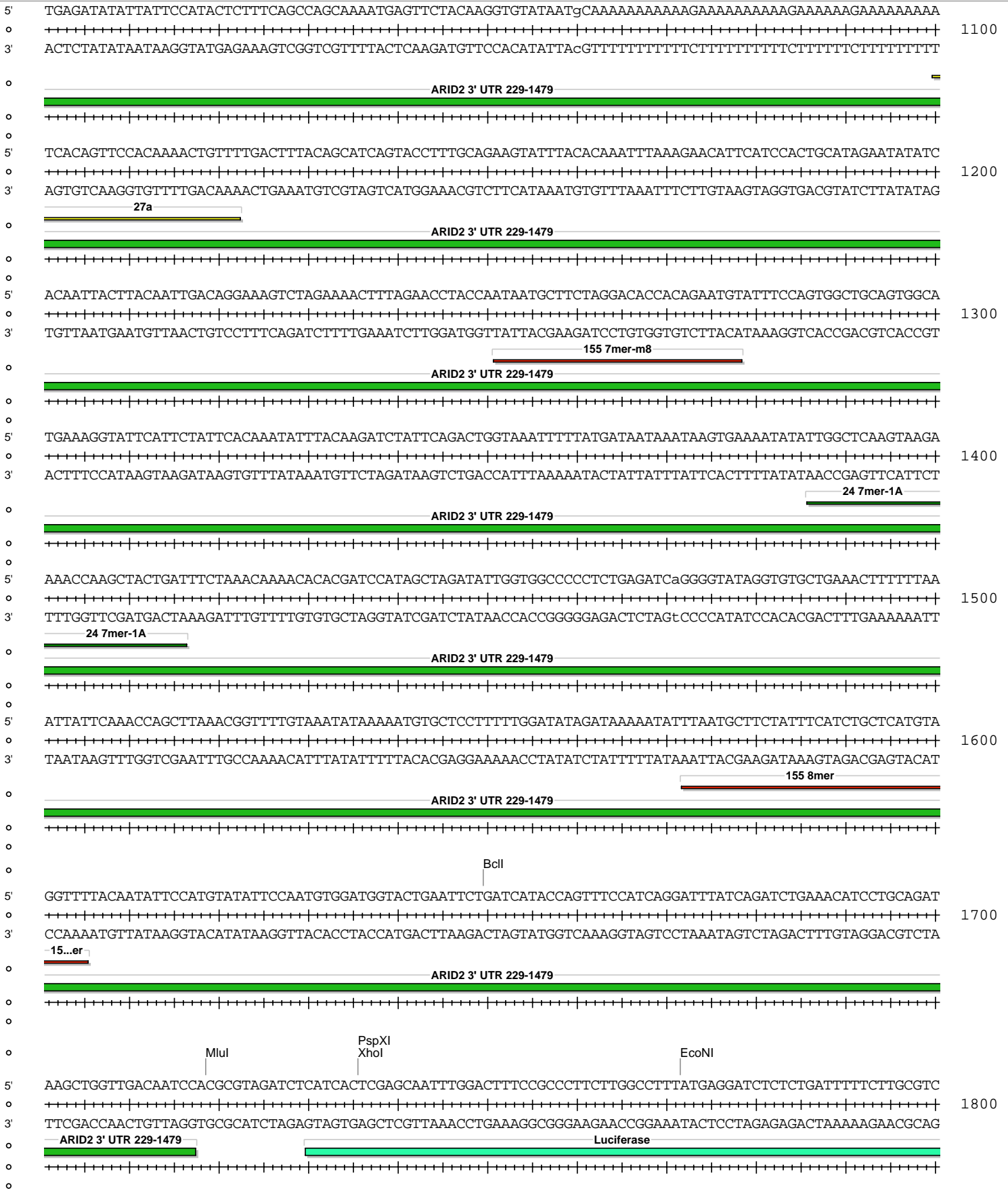
pMIR-REPORT

| Absent Sites | 0 | AarI,AbstI,AfeI,AfII,AleI,Apal,Ascl,AsiSI,BaeI,BaeI',BarI,BarI',BbvCI,BlpI,BmgBI,Bpu10I,BstZ17I,EcoICRI,Fall,Fall',FseI,FspAI,MauBI,MreI,NaeI,NgoMIV,Nrul,PasI,PfIMI,PmeI,PmlI,PshAI,PspOMI,SacI,SanDI,SgrDI,SpeI,SrfI,Swal |
|--------------|---|---|
| Acc65I | 1 | 3660 (7330) |
| AccI | 1 | 6795 (7330) |
| AgeI | 1 | 6963 (7330) |
| AhdI | 1 | 5017 (7330) |
| AloI | 1 | 3419 (7330) |
| AloI' | 1 | 3387 (7330) |
| Arsl | 1 | 2207 (7330) |
| Arsl' | 1 | 2239 (7330) |
| AvrII | 1 | 7014 (7330) |
| BamHI | 1 | 3395 (7330) |
| BclI | 1 | 1650 (7330) |
| BsaBI | 1 | 6179 (7330) |
| BsmI | 1 | 6092 (7330) |
| BssHII | 1 | 6447 (7330) |
| BstXI | 1 | 629 (7330) |
| BtgZI | 1 | 3645 (7330) |
| Clal | 1 | 2023 (7330) |
| CspCI | 1 | 3609 (7330) |
| CspCI' | 1 | 3574 (7330) |
| DraIII | 1 | 6338 (7330) |
| EcoNI | 1 | 1772 (7330) |
| EcoO109I | 1 | 2208 (7330) |
| EcoRV | 1 | 2052 (7330) |
| HindIII | 1 | 463 (7330) |
| HpaI | 1 | 6078 (7330) |
| KpnI | 1 | 3664 (7330) |
| MluI | 1 | 1719 (7330) |
| MscI | 1 | 6531 (7330) |
| NdeI | 1 | 185 (7330) |
| NotI | 1 | 407 (7330) |
| PacI | 1 | 2068 (7330) |
| PpuMI | 1 | 2208 (7330) |
| PspXI | 1 | 1736 (7330) |
| Psrl | 1 | 3257 (7330) |
| Psrl' | 1 | 3225 (7330) |
| RsrII | 1 | 6787 (7330) |
| SacII | 1 | 6694 (7330) |
| Sall | 1 | 6794 (7330) |
| SbfI | 1 | 6986 (7330) |
| Scal | 1 | 5497 (7330) |
| SfiI | 1 | 7068 (7330) |
| SgrAI | 1 | 1958 (7330) |
| SnaBI | 1 | 3643 (7330) |
| Tth111I | 1 | 6863 (7330) |
| XcmI | 1 | 2656 (7330) |
| XhoI | 1 | 1736 (7330) |

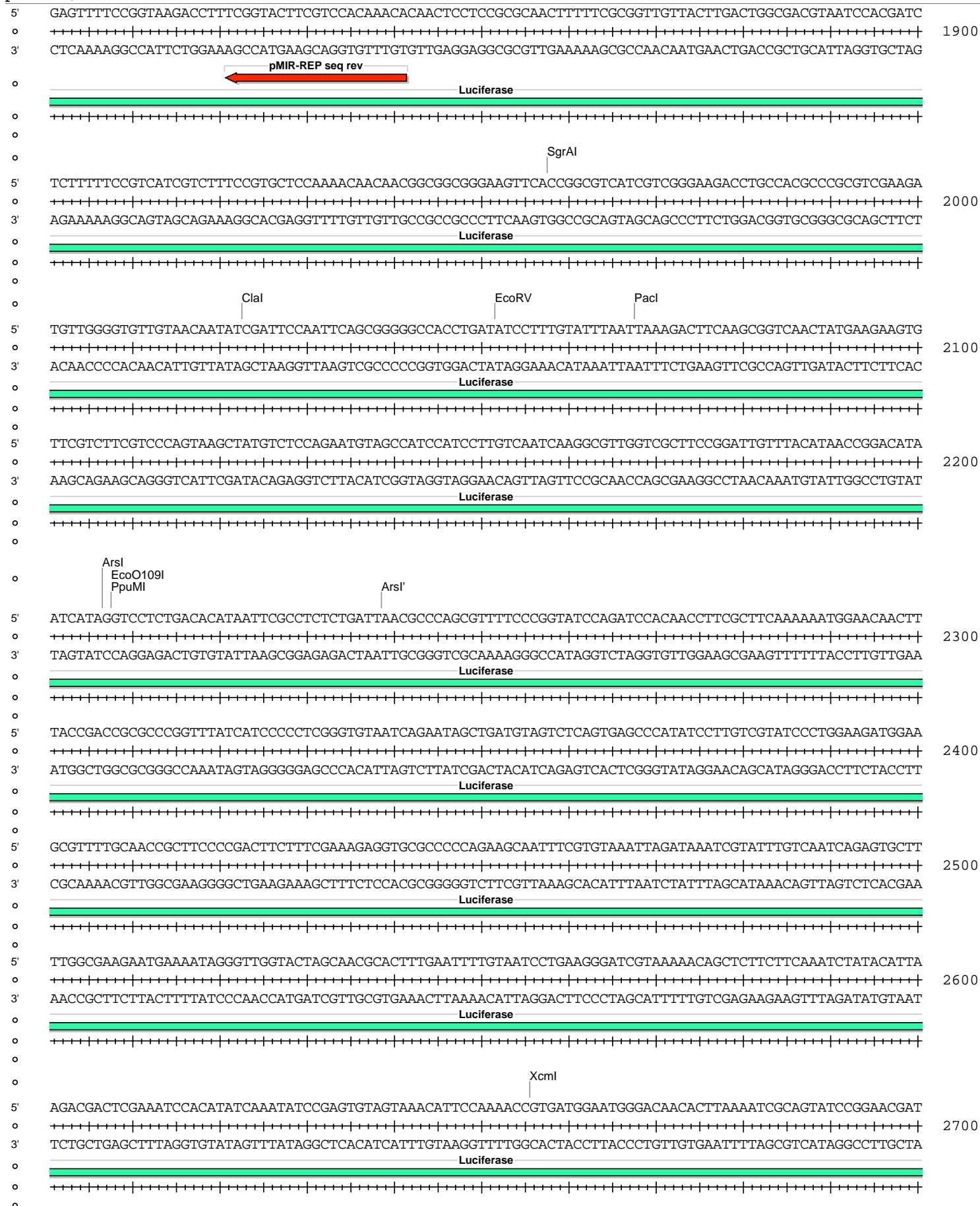
pMIR-REPORT



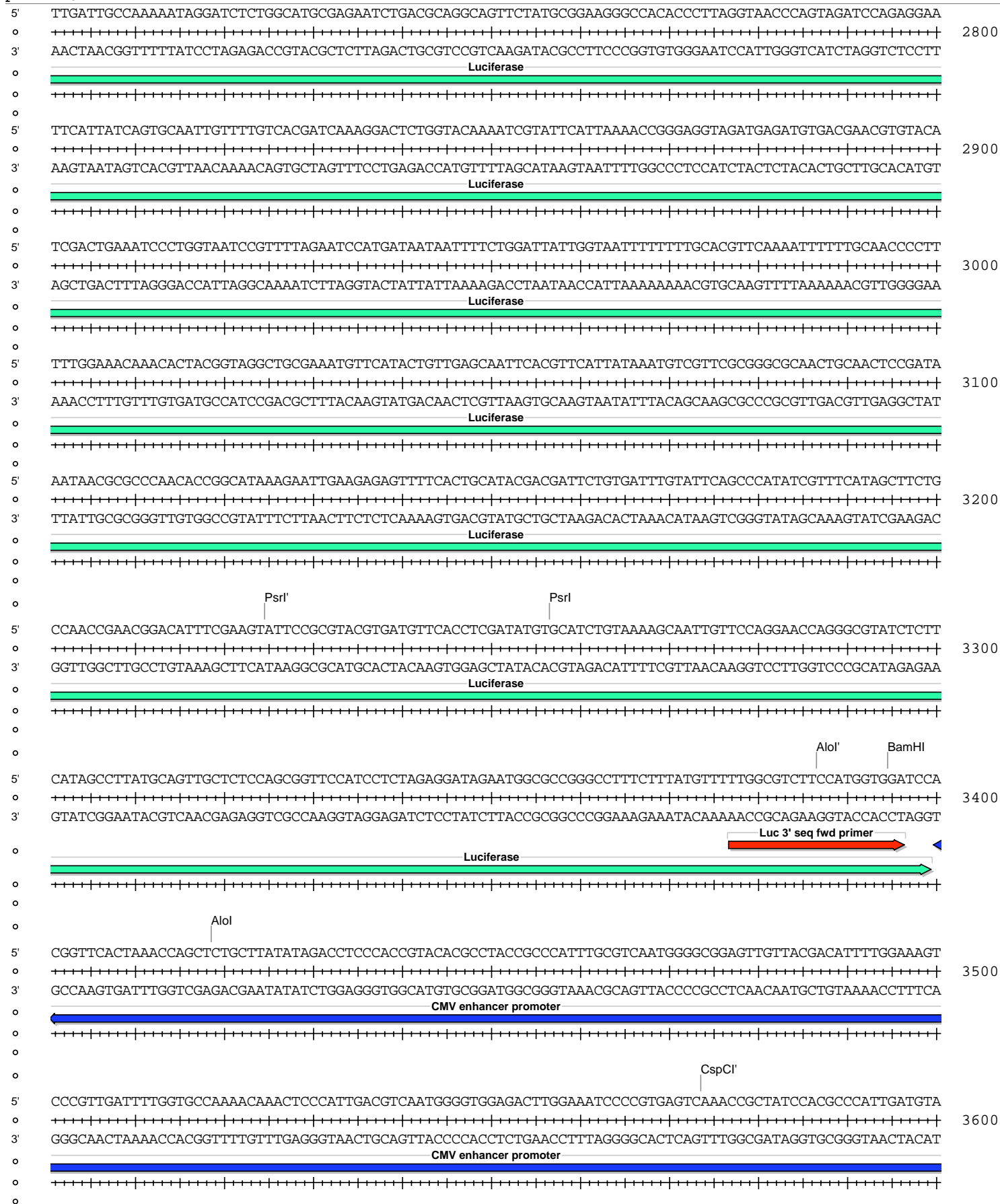
pMIR-REPORT

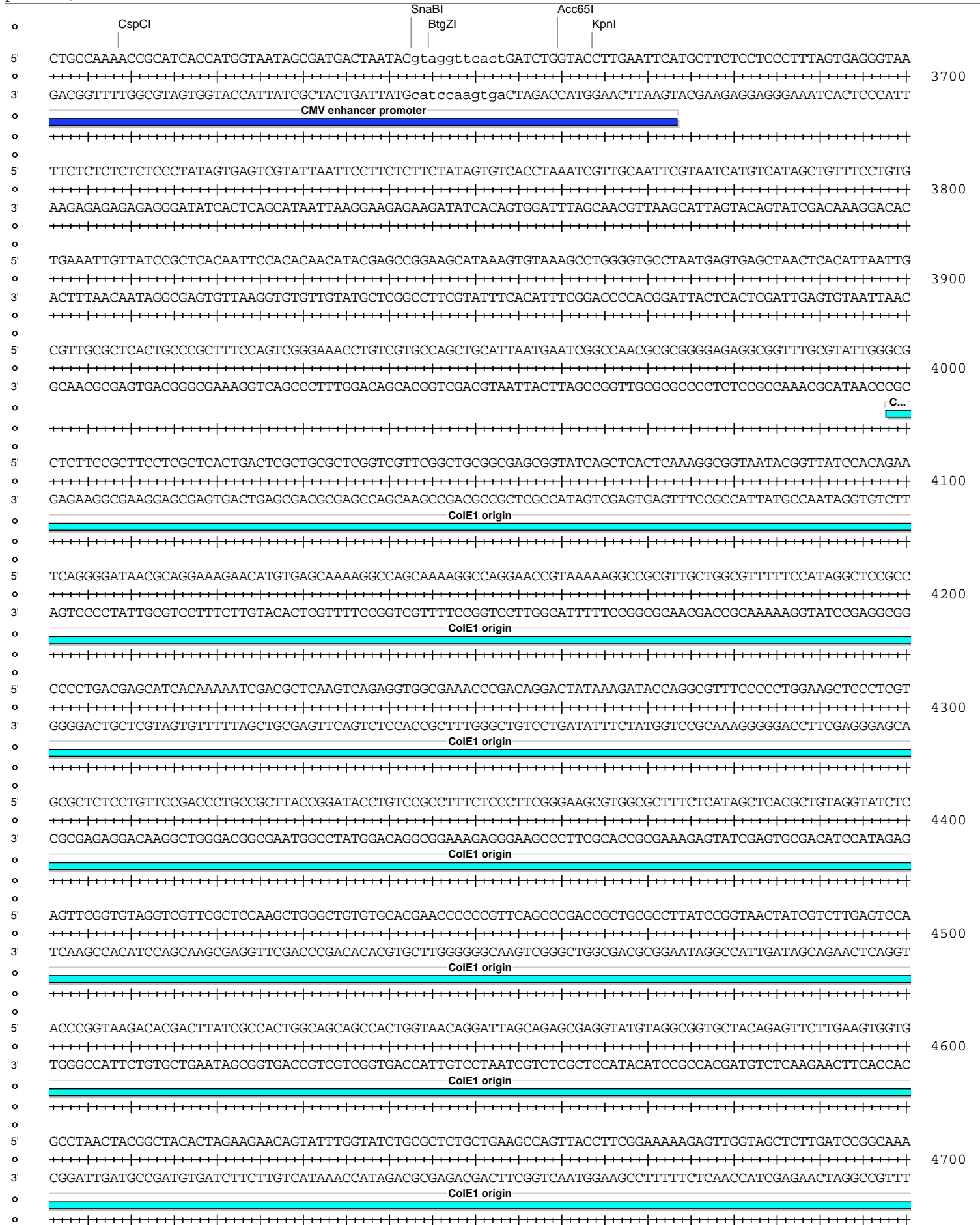


pMIR-REPORT

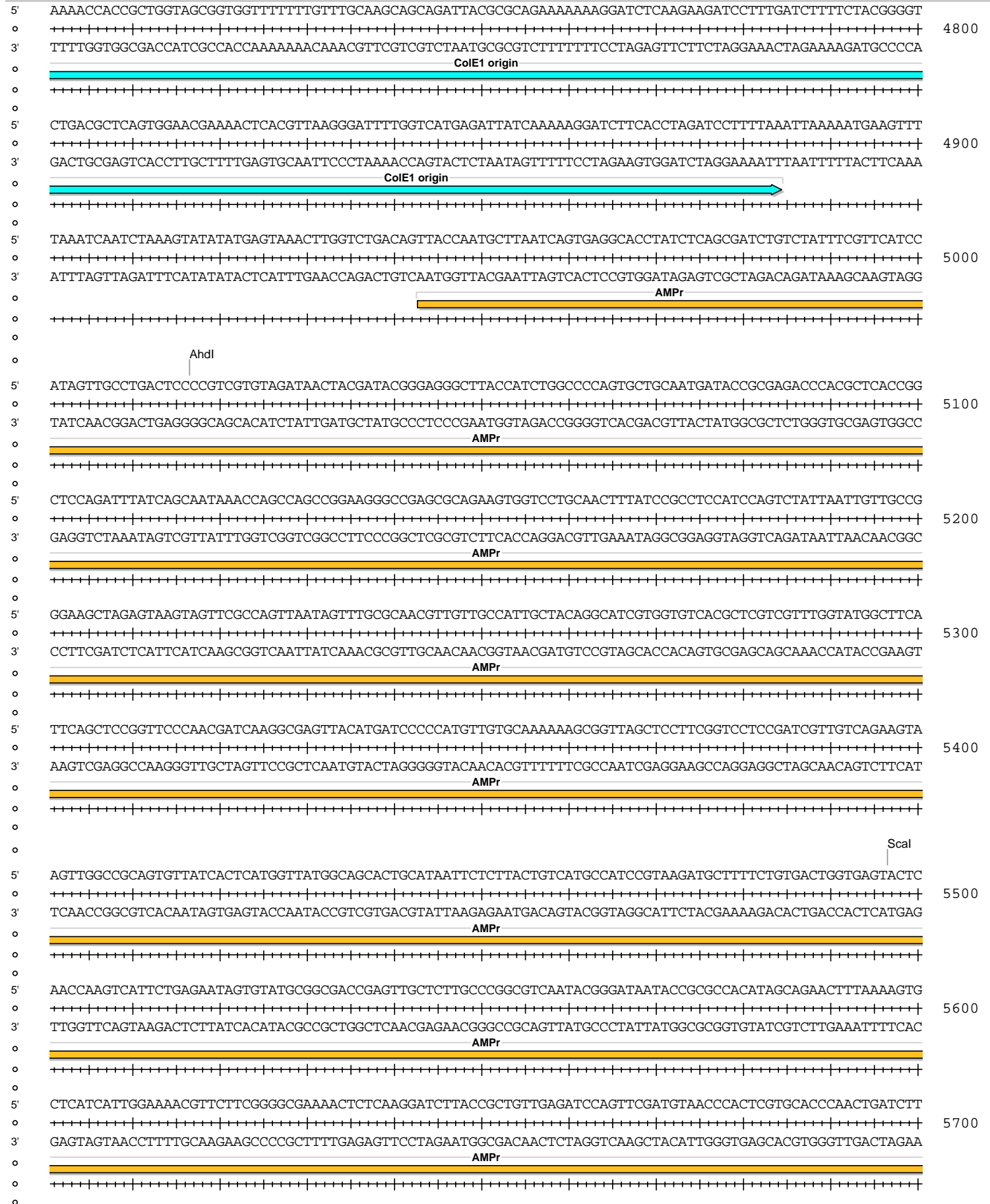


pMIR-REPORT

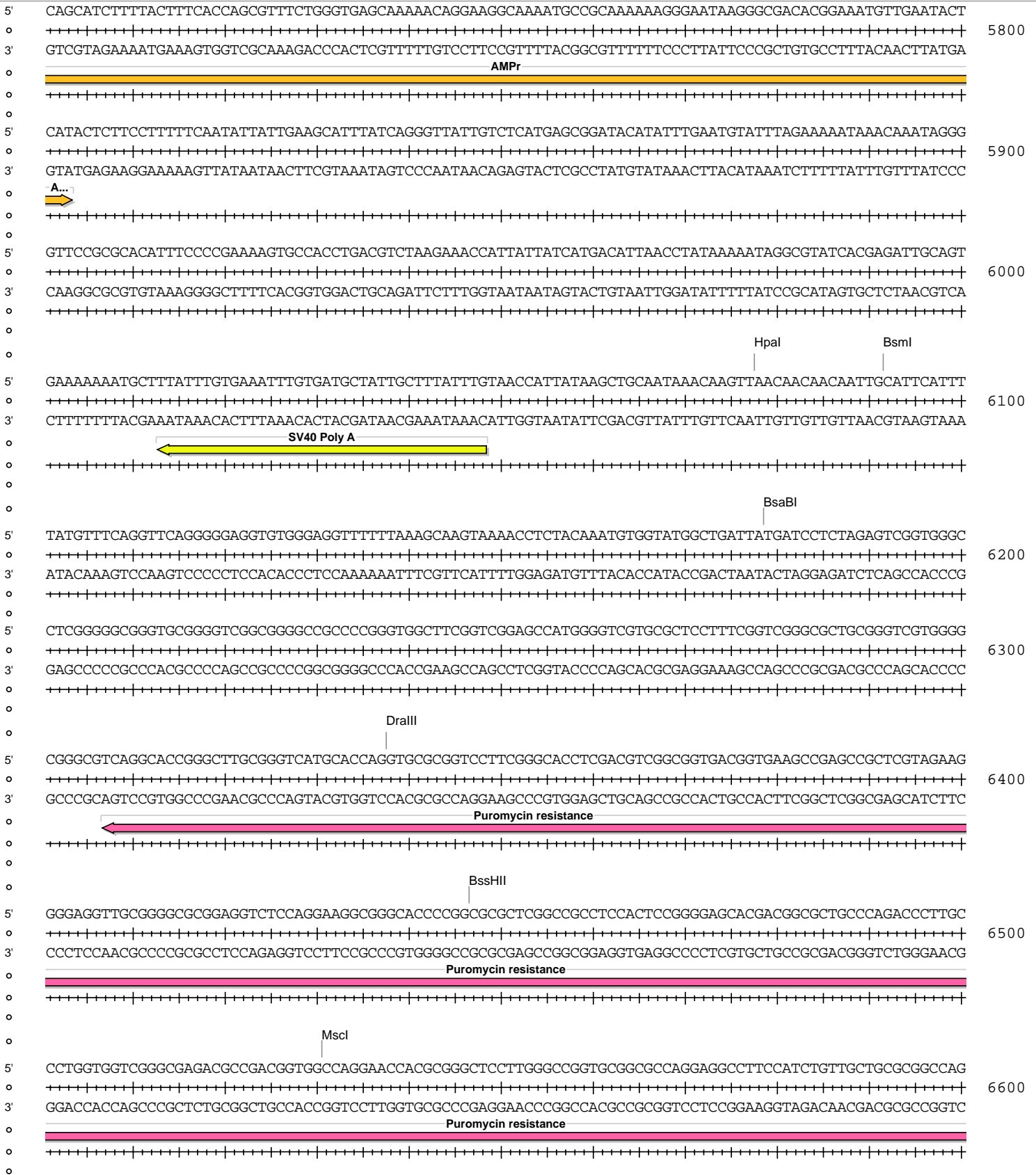




pMIR-REPORT



pMIR-REPORT



pMIR-REPORT

