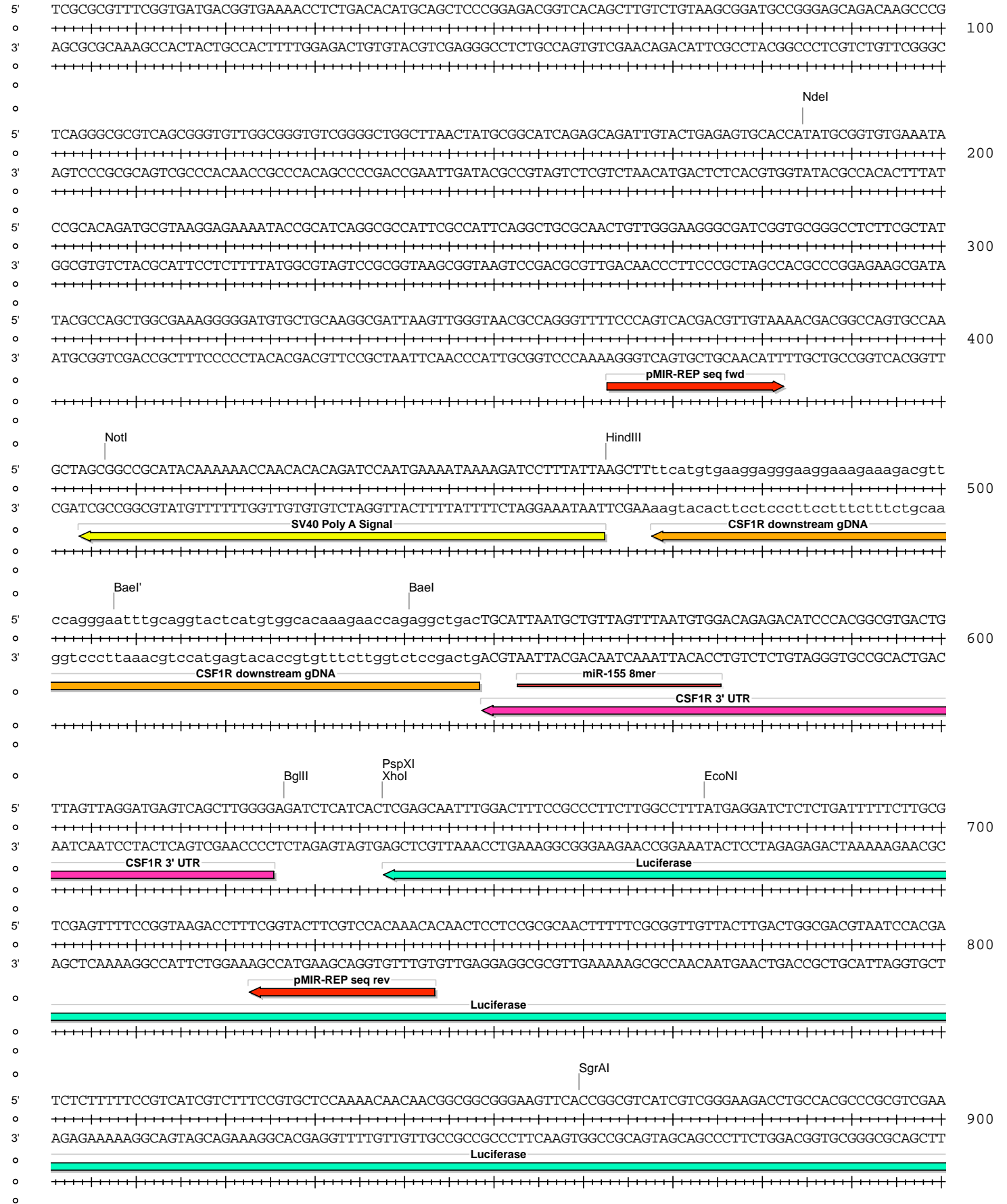


pMIR-REP-dCMV-CSF1R 3' UTR (698-775) wt + downstream gDNA

Absent Sites	0	AarI,AbstI,AfeI,AfII,AleI,ApaI,AscI,AsiSI,BarI,BarI',BbvCI,BclI,BlpI,BmgBI,Bpu10I,BsgI,BstXI,BstZ17I,EcoICRI,Fall,Fall',FseI,FspAI,MauBI,MluI,MreI,NaeI,NgoMIV,NruI,PasI,PfIMi,PmeI,PmlI,PshAI,PspOMI,SacI,SanDI,SgrDI,SpeI,SrfI,Swal
Acc65I	1	2562 (6232)
AccI	1	5697 (6232)
AgeI	1	5865 (6232)
AhdI	1	3919 (6232)
AjuI	1	1408 (6232)
AjuI'	1	1440 (6232)
Alol	1	2321 (6232)
Alol'	1	2289 (6232)
Arsl	1	1109 (6232)
Arsl'	1	1141 (6232)
AvrII	1	5916 (6232)
BaeI	1	541 (6232)
BaeI'	1	508 (6232)
BamHI	1	2297 (6232)
BglII	1	627 (6232)
BsaBI	1	5081 (6232)
BsmI	1	4994 (6232)
BsrGI	1	1798 (6232)
BssHII	1	5349 (6232)
Bsu36I	1	1676 (6232)
BtgZI	1	2547 (6232)
Clal	1	925 (6232)
CspCI	1	2511 (6232)
CspCI'	1	2476 (6232)
EcoNI	1	674 (6232)
EcoO109I	1	1110 (6232)
EcoRV	1	954 (6232)
HindIII	1	463 (6232)
HpaI	1	4980 (6232)
KpnI	1	2566 (6232)
MscI	1	5433 (6232)
NdeI	1	185 (6232)
NotI	1	407 (6232)
Pacl	1	970 (6232)
PciI	1	3026 (6232)
PpuMI	1	1110 (6232)
PspXI	1	638 (6232)
Psrl	1	2159 (6232)
Psrl'	1	2127 (6232)
PstI	1	5888 (6232)
RsrII	1	5689 (6232)
SacII	1	5596 (6232)
Sall	1	5696 (6232)
SbfI	1	5888 (6232)
Scal	1	4399 (6232)
SfiI	1	5970 (6232)
SgrAI	1	860 (6232)
SnaBI	1	2545 (6232)
SspI	1	4723 (6232)
Tth111I	1	5765 (6232)
XcmI	1	1558 (6232)
XhoI	1	638 (6232)
Xmnl	1	4518 (6232)

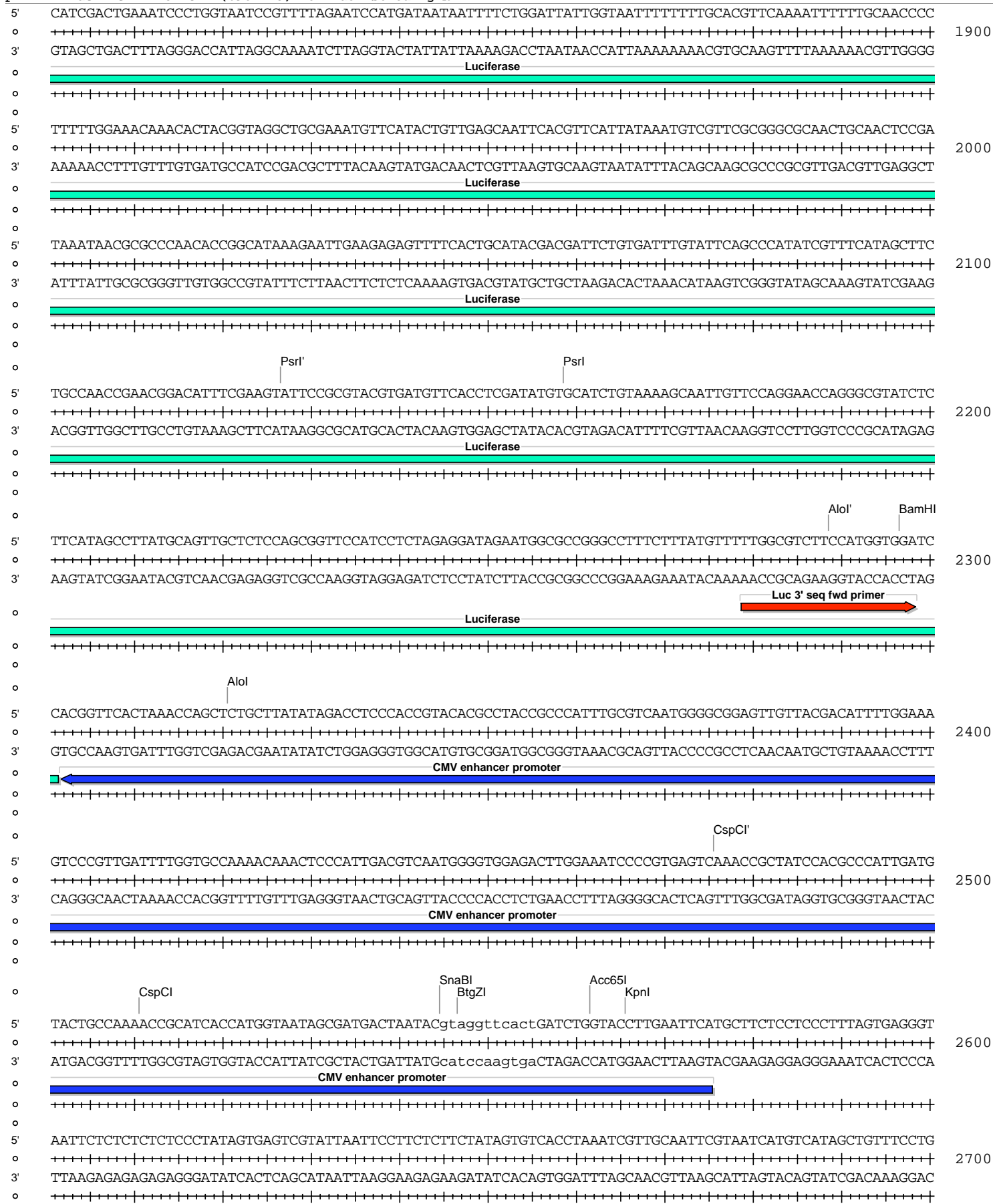
pMIR-REP-dCMV-CSF1R 3' UTR (698-775) wt + downstream gDNA



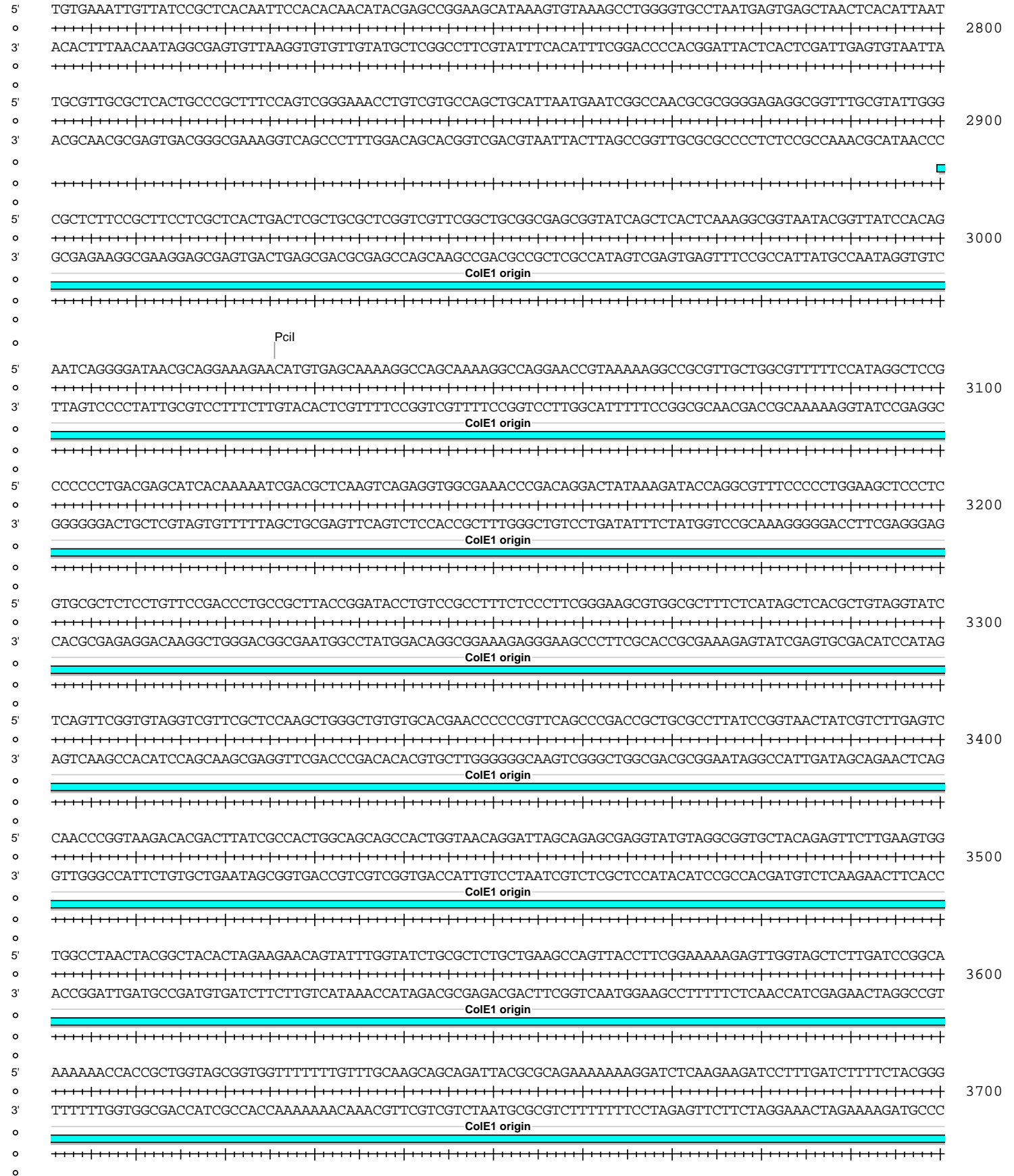
pMIR-REP-dCMV-CSF1R 3' UTR (698-775) wt + downstream gDNA



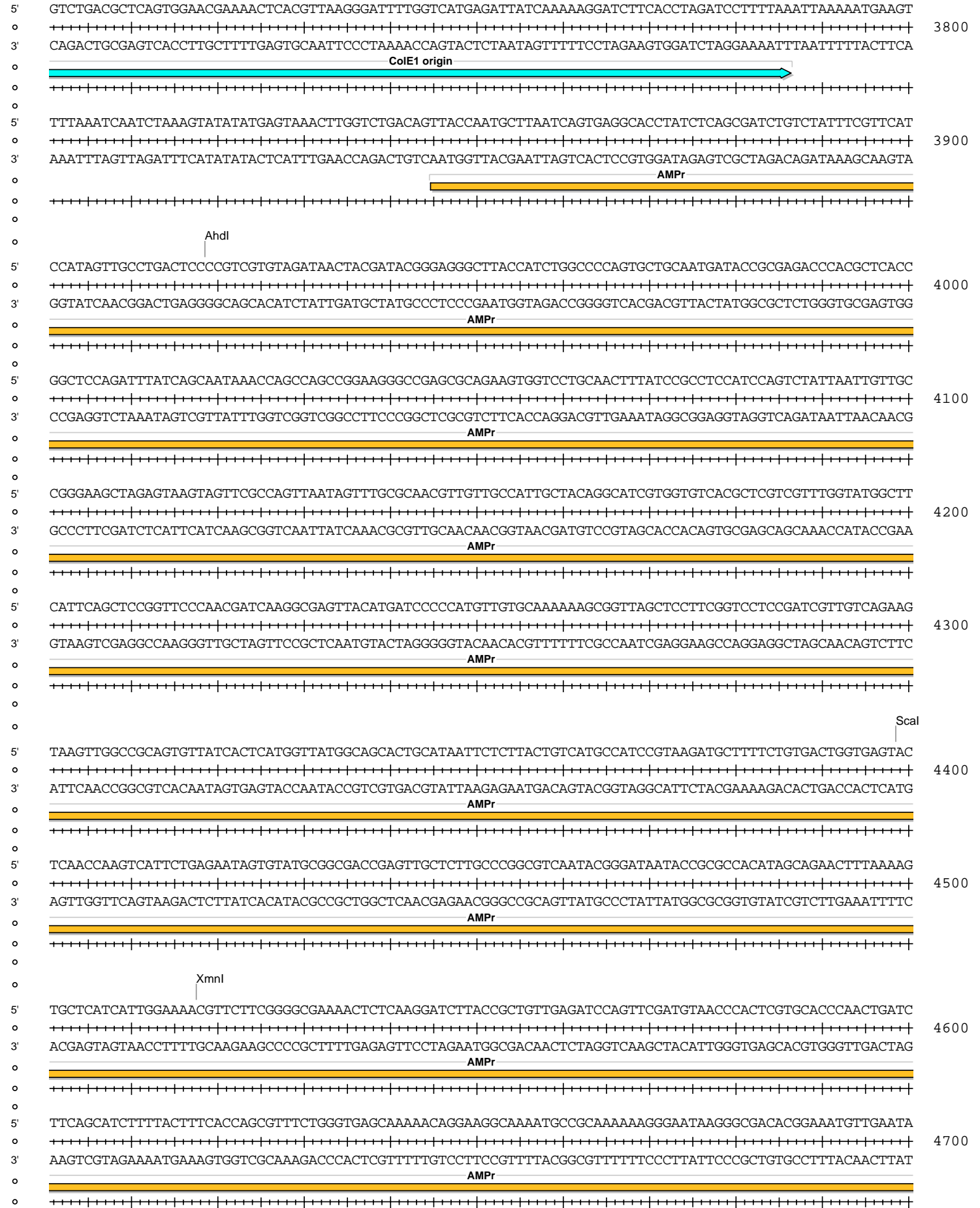
pMIR-REP-dCMV-CSF1R 3' UTR (698-775) wt + downstream gDNA



pMIR-REP-dCMV-CSF1R 3' UTR (698-775) wt + downstream gDNA



pMIR-REP-dCMV-CSF1R 3' UTR (698-775) wt + downstream gDNA



pMIR-REP-dCMV-CSF1R 3' UTR (698-775) wt + downstream gDNA

