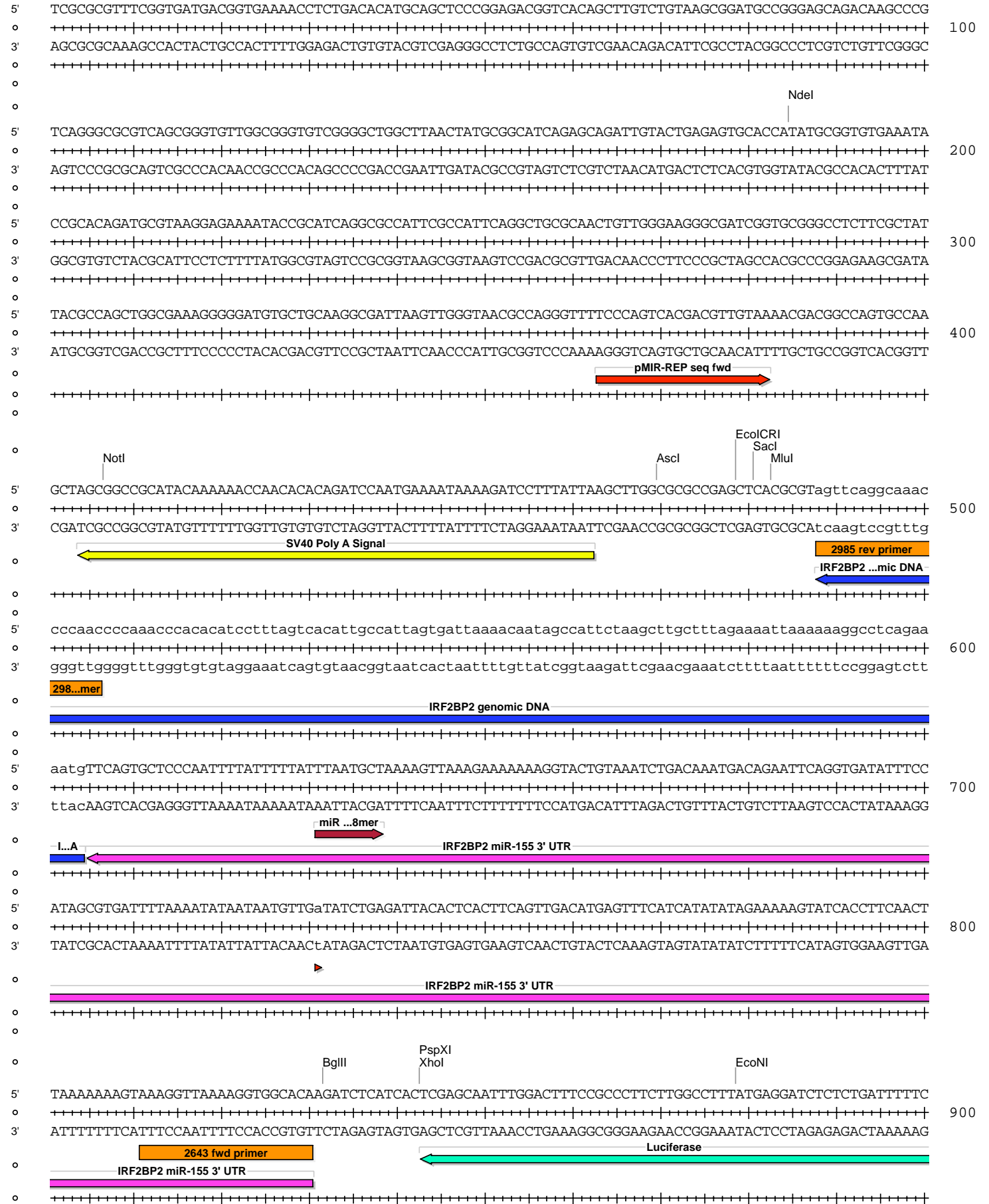


pMIR-REP-dCMV IRF2BP2 (2643-2985) 3'UTR

Absent Sites	0	AarI,AbstI,AfeI,AfIII,AleI,Apal,AsiSI,BaeI,BaeI',BarI,BarI',BbvCI,BclI,BlpI,BmgBI,Bpu10I,BsgI,BstXI,BstZ17I,Fall,Fall',FseI,FspAI,MauBI,MreI,NaeI,NgoMIV,NruI,PasI,PfiMI,PmeI,PmlI,PshAI,PspOMI,SanDI,SgrDI,SpeI,SrfI,Swal
Acc65I	1	2767 (6437)
AccI	1	5902 (6437)
AgeI	1	6070 (6437)
AhdI	1	4124 (6437)
AjuI	1	1613 (6437)
AjuI'	1	1645 (6437)
Alol	1	2526 (6437)
Alol'	1	2494 (6437)
AlwNI	1	3647 (6437)
Arsl	1	1314 (6437)
Arsl'	1	1346 (6437)
AscI	1	470 (6437)
AvrII	1	6121 (6437)
BamHI	1	2502 (6437)
BglII	1	832 (6437)
BsaBI	1	5286 (6437)
BsmI	1	5199 (6437)
BsrGI	1	2003 (6437)
Bsu36I	1	1881 (6437)
BtgZI	1	2752 (6437)
ClaI	1	1130 (6437)
CspCI	1	2716 (6437)
CspCI'	1	2681 (6437)
DraIII	1	5445 (6437)
EcoCRI	1	479 (6437)
EcoNI	1	879 (6437)
EcoO109I	1	1315 (6437)
HpaI	1	5185 (6437)
KpnI	1	2771 (6437)
MluI	1	483 (6437)
MscI	1	5638 (6437)
NdeI	1	185 (6437)
NotI	1	407 (6437)
PacI	1	1175 (6437)
PciI	1	3231 (6437)
PpuMI	1	1315 (6437)
PspXI	1	843 (6437)
Psrl	1	2364 (6437)
Psrl'	1	2332 (6437)
PstI	1	6093 (6437)
RsrII	1	5894 (6437)
SacI	1	481 (6437)
SacII	1	5801 (6437)
Sall	1	5901 (6437)
SbfI	1	6093 (6437)
Scal	1	4604 (6437)
SfiI	1	6175 (6437)
SgrAI	1	1065 (6437)
SnaBI	1	2750 (6437)
SspI	1	4928 (6437)
Tth111I	1	5970 (6437)
XcmI	1	1763 (6437)
XhoI	1	843 (6437)

pMIR-REP-dCMV IRF2BP2 (2643-2985) 3'UTR



pMIR-REP-dCMV IRF2BP2 (2643-2985) 3'UTR

