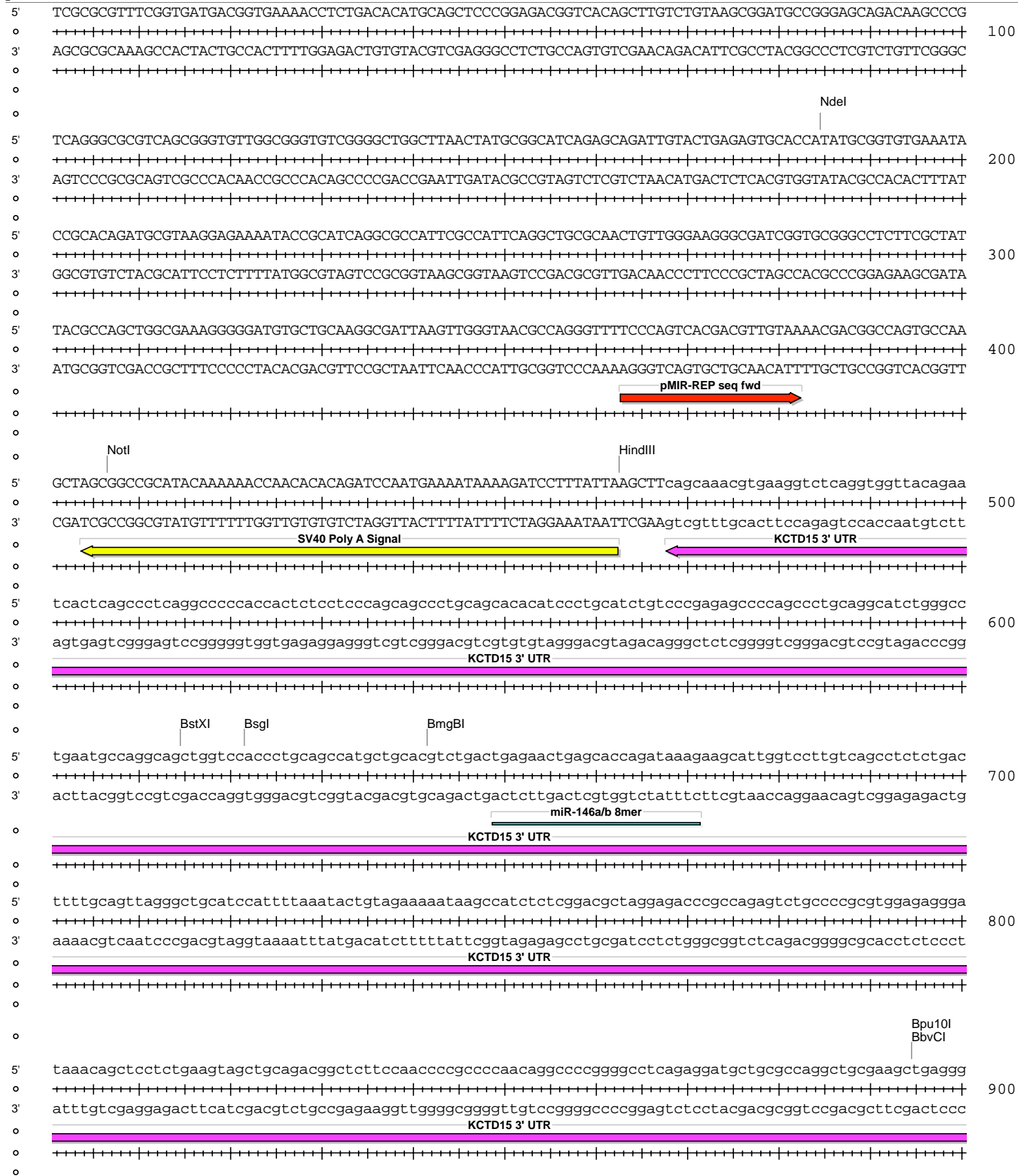
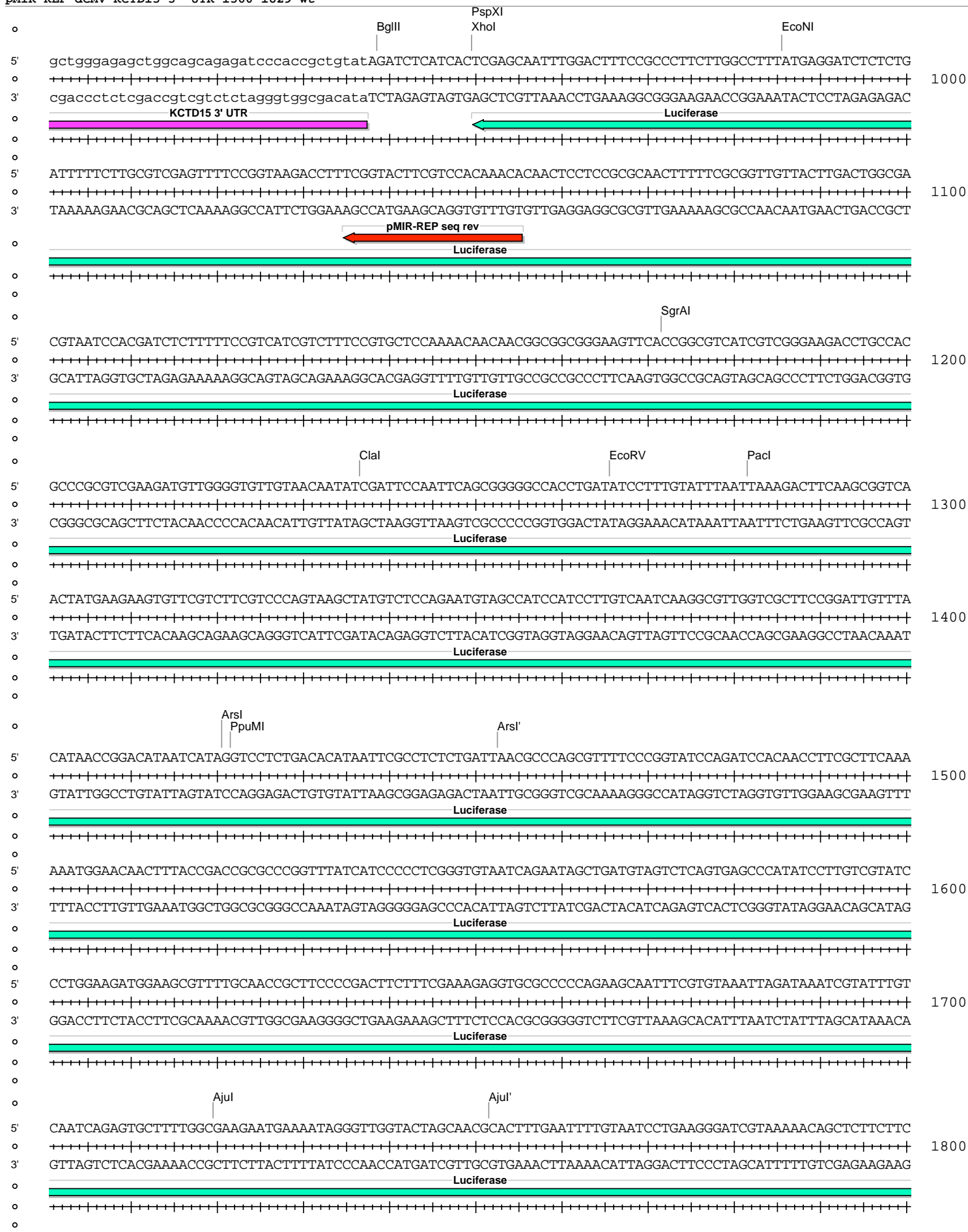
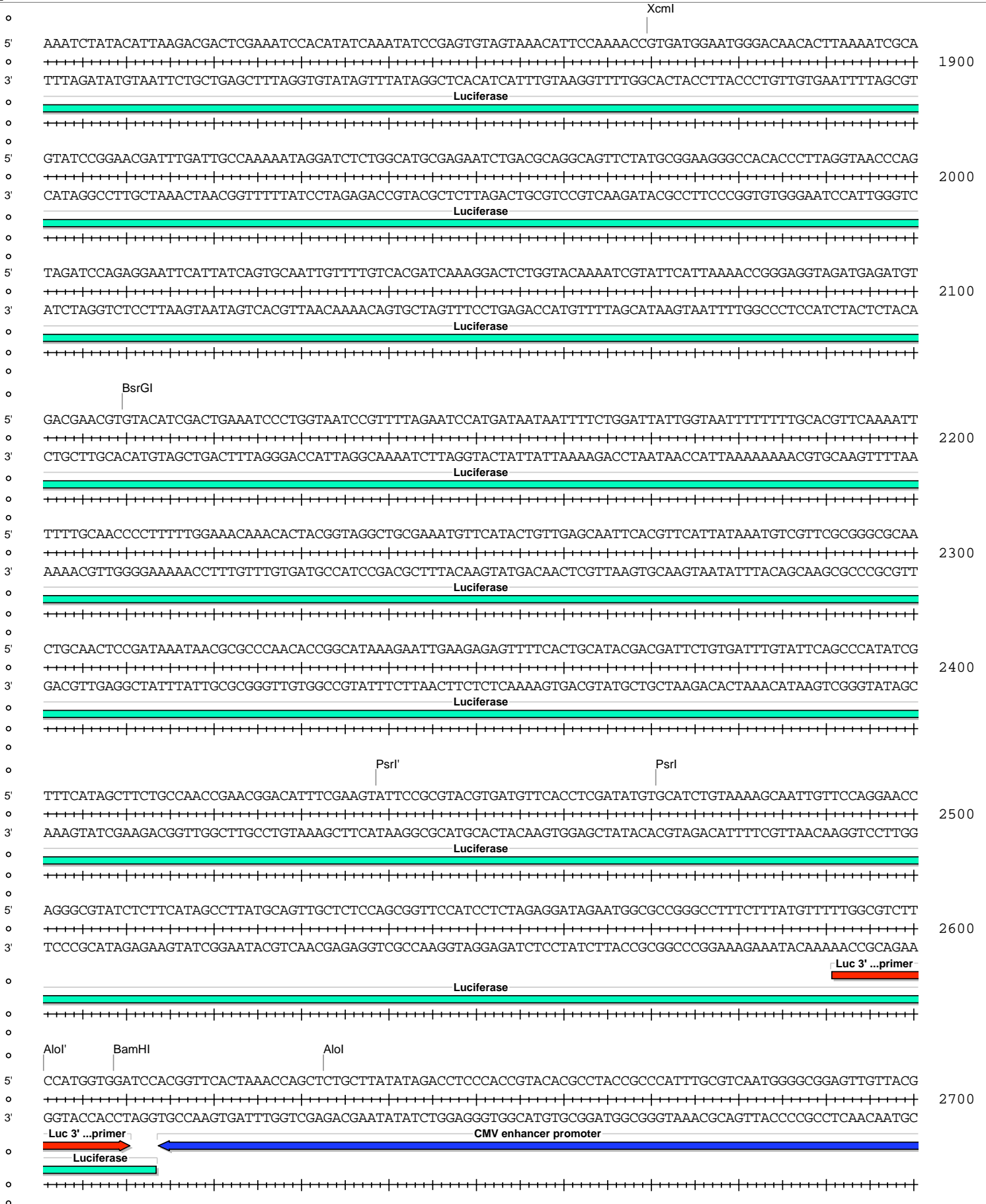


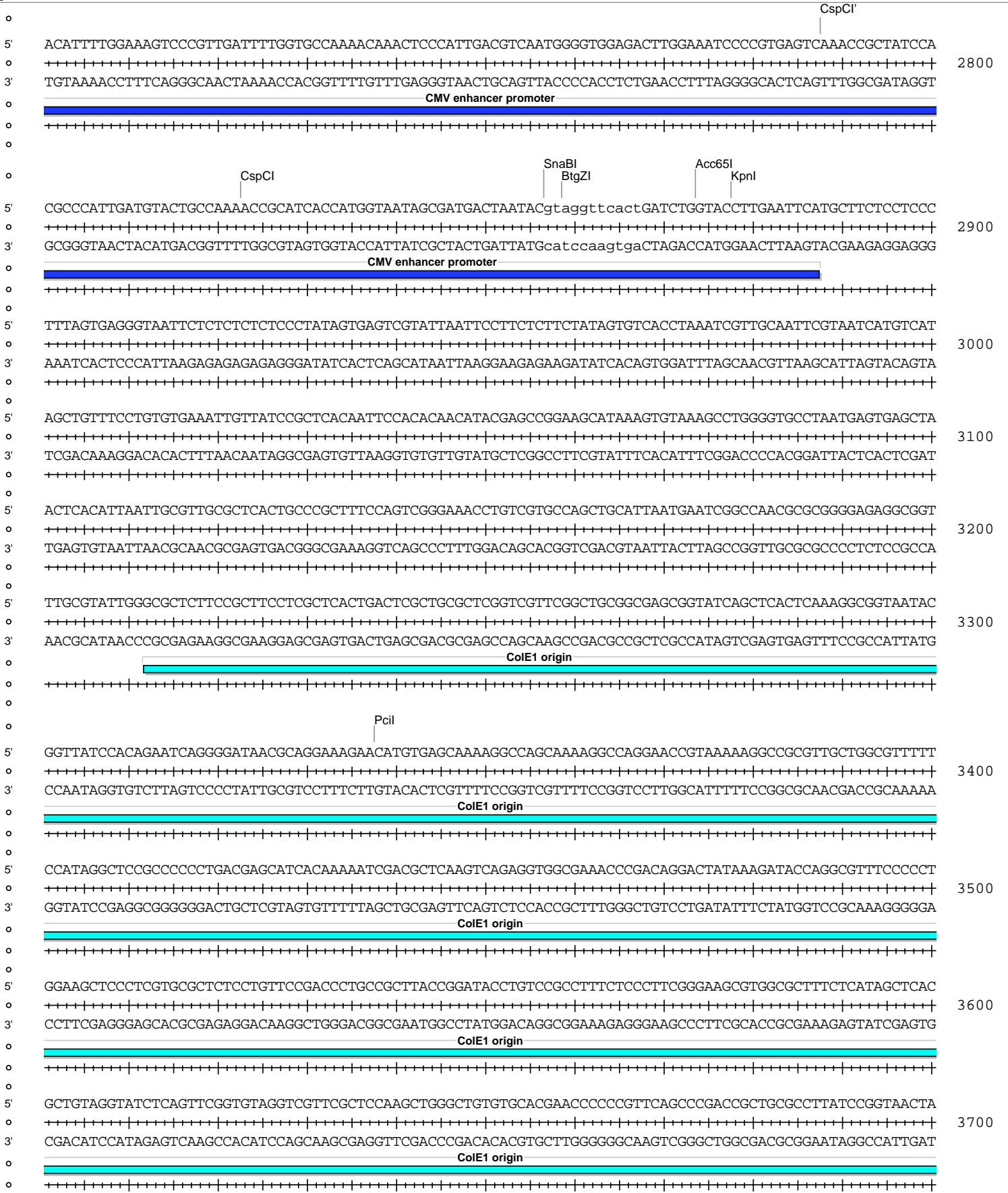
Absent Sites	0	AarI, AclI, AfelI, AfIII, AleI, ApaI, AscI, AsiSI, BaeI, BaeI', BarI, BarI', BclI, BclI', BglI, BglI', BstZ17I, EcoICRI, Fall, Fall', FseI, FspAI, MauBI, MluI, MreI, NaeI, NgoMIV, NruI, PaeI, PfiMI, PmeI, PmlI, PshAI, PspOMI, SacI, SanDI, SgrDI, SpeI, SrfI, SwaI
Acc65I	1	2874 (6544)
AccI	1	6009 (6544)
AgeI	1	6177 (6544)
AhdI	1	4231 (6544)
AjuI	1	1720 (6544)
AjuI'	1	1752 (6544)
Alol	1	2633 (6544)
Alol'	1	2601 (6544)
ArsI	1	1421 (6544)
ArsI'	1	1453 (6544)
AvrII	1	6228 (6544)
BamHI	1	2609 (6544)
BbvCI	1	895 (6544)
BglII	1	939 (6544)
BmgBI	1	642 (6544)
Bpu10I	1	895 (6544)
BsaBI	1	5393 (6544)
BsgI	1	622 (6544)
BsrGI	1	2110 (6544)
BssHII	1	5661 (6544)
BstXI	1	615 (6544)
BtgZI	1	2859 (6544)
Clal	1	1237 (6544)
CspCI	1	2823 (6544)
CspCI'	1	2788 (6544)
DrallI	1	5552 (6544)
EcoNI	1	986 (6544)
EcoRV	1	1266 (6544)
HindIII	1	463 (6544)
HpaI	1	5292 (6544)
KpnI	1	2878 (6544)
MscI	1	5745 (6544)
NdeI	1	185 (6544)
NotI	1	407 (6544)
Pacl	1	1282 (6544)
PciI	1	3338 (6544)
PpuMI	1	1422 (6544)
PspXI	1	950 (6544)
Psrl	1	2471 (6544)
Psrl'	1	2439 (6544)
RsrII	1	6001 (6544)
SacII	1	5908 (6544)
Sall	1	6008 (6544)
Scal	1	4711 (6544)
Sfil	1	6282 (6544)
SgrAI	1	1172 (6544)
SnaBI	1	2857 (6544)
SspI	1	5035 (6544)
Tth111I	1	6077 (6544)
XcmI	1	1870 (6544)
XhoI	1	950 (6544)
XmnI	1	4830 (6544)

pMIR-REP-dCMV-KCTD15 3' UTR 1360-1829 wt









pMIR-REP-dCMV-KCTD15 3' UTR 1360-1829 wt

