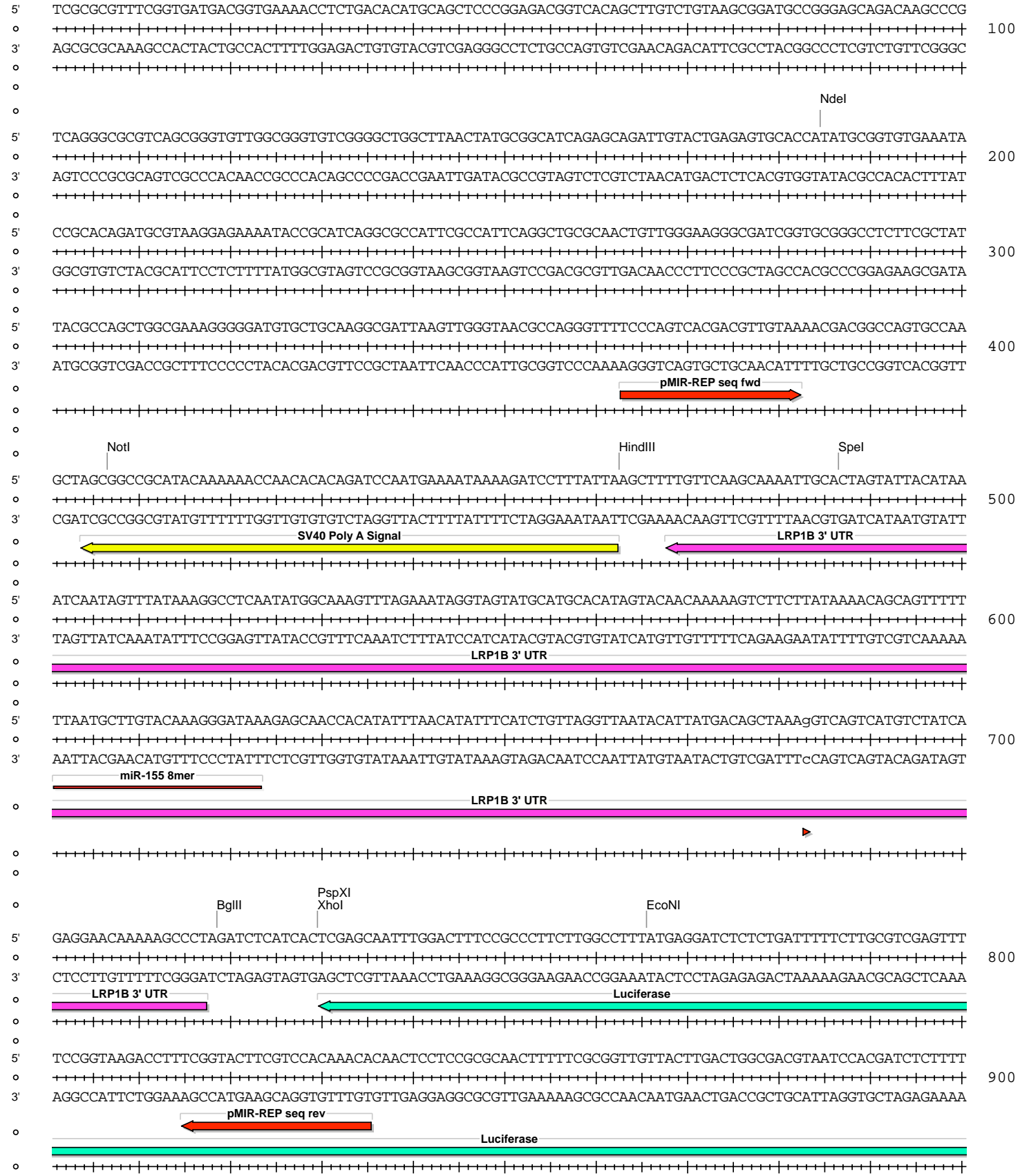
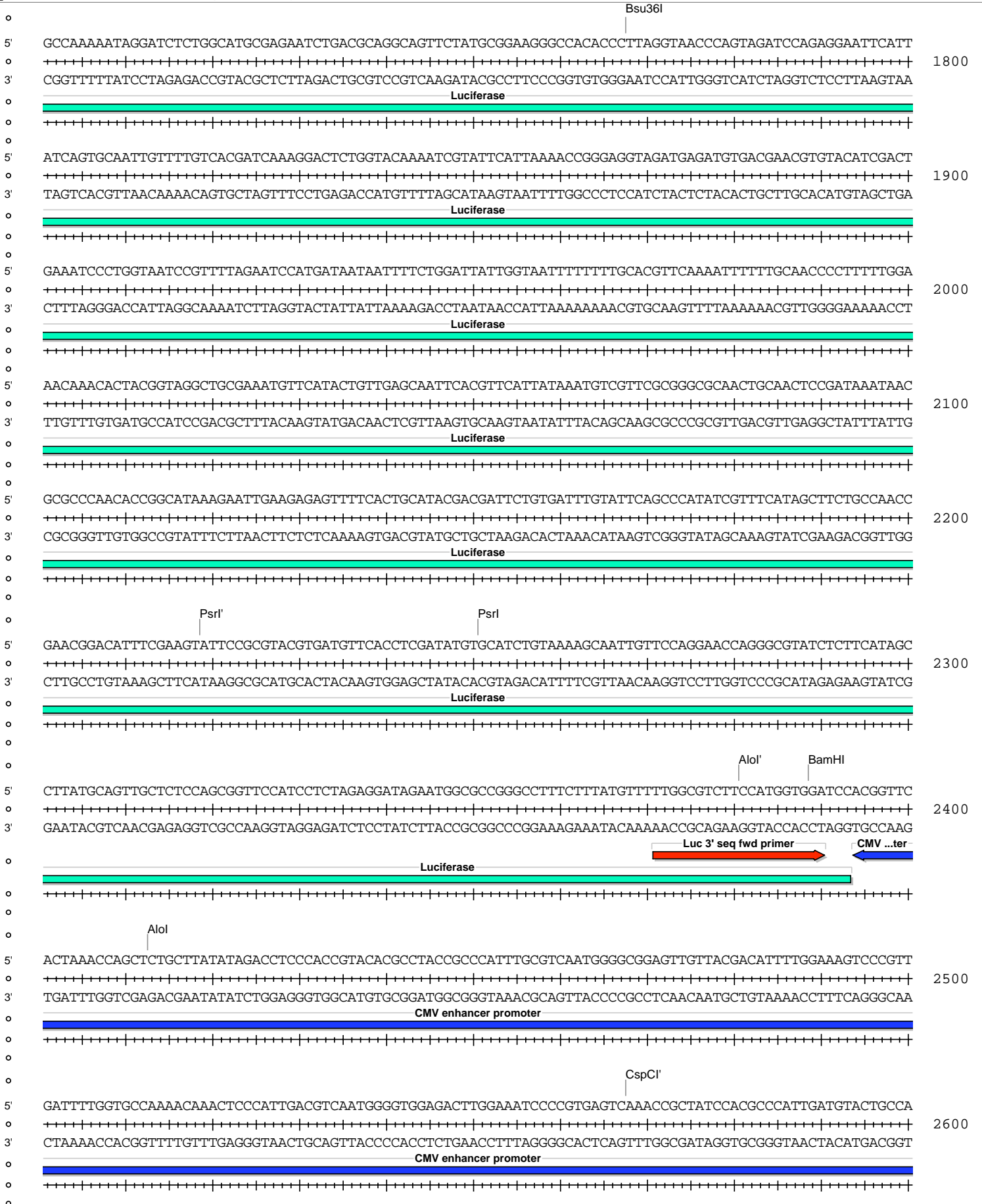


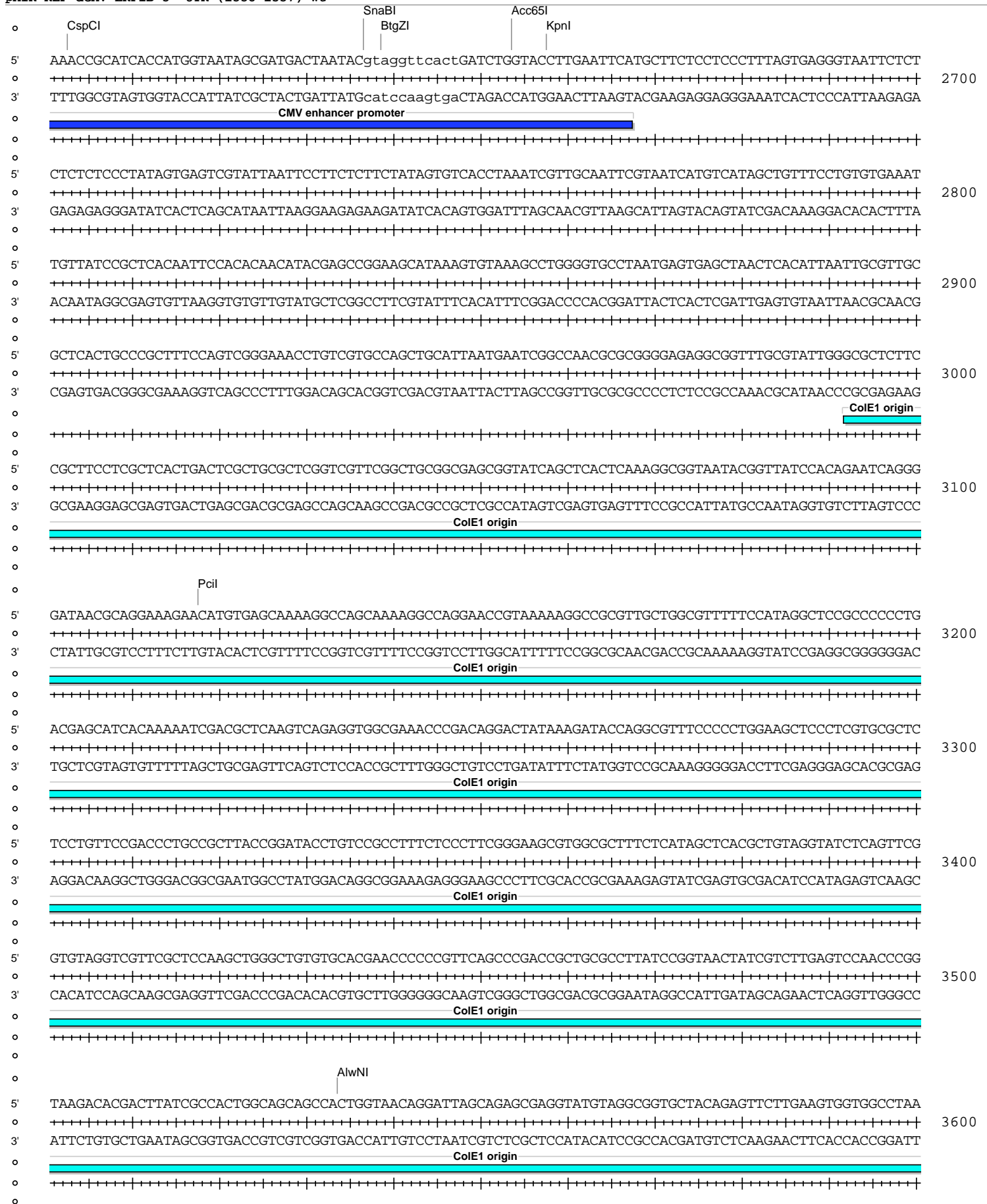
pMIR-REP-dCMV-LRP1B 3' UTR (1338-1537) wt

Absent Sites	0	AarI,AbstI,AfeI,AfIII,AleI,Apal,AscI,AsiSI,BaeI,BaeI',BarI,BarI',BbvCI,BclI,BlpI,BmgBI,Bpu10I,BsgI,BstXI,BstZ17I,EcoICRI,Fall,Fall',FseI,FspAI,MauBI,MluI,MreI,NaeI,NgoMIV,NruI,PasI,PfIMI,PmeI,PmlI,PshAI,PspOMI,SacI,SanDI,SgrDI,SrfI,Swal
Acc65I	1	2654 (6324)
AccI	1	5789 (6324)
AgeI	1	5957 (6324)
AhdI	1	4011 (6324)
AjuI	1	1500 (6324)
AjuI'	1	1532 (6324)
Alol	1	2413 (6324)
Alol'	1	2381 (6324)
AlwNI	1	3534 (6324)
Arsl	1	1201 (6324)
Arsl'	1	1233 (6324)
AvrII	1	6008 (6324)
BamHI	1	2389 (6324)
BglII	1	719 (6324)
BsaBI	1	5173 (6324)
BsmI	1	5086 (6324)
BssHII	1	5441 (6324)
Bsu36I	1	1768 (6324)
BtgZI	1	2639 (6324)
Clal	1	1017 (6324)
CspCI	1	2603 (6324)
CspCI'	1	2568 (6324)
DraIII	1	5332 (6324)
EcoNI	1	766 (6324)
EcoO109I	1	1202 (6324)
EcoRV	1	1046 (6324)
HindIII	1	463 (6324)
HpaI	1	5072 (6324)
KpnI	1	2658 (6324)
MscI	1	5525 (6324)
NdeI	1	185 (6324)
NotI	1	407 (6324)
PacI	1	1062 (6324)
PciI	1	3118 (6324)
PpuMI	1	1202 (6324)
PspXI	1	730 (6324)
PsrI	1	2251 (6324)
PsrI'	1	2219 (6324)
PstI	1	5980 (6324)
RsrII	1	5781 (6324)
SacII	1	5688 (6324)
Sall	1	5788 (6324)
SbfI	1	5980 (6324)
Scal	1	4491 (6324)
SfiI	1	6062 (6324)
SgrAI	1	952 (6324)
SnaBI	1	2637 (6324)
SpeI	1	487 (6324)
SspI	1	4815 (6324)
Tth111I	1	5857 (6324)
XcmI	1	1650 (6324)
XhoI	1	730 (6324)
XmnI	1	4610 (6324)

pMIR-REP-dCMV-LRP1B 3' UTR (1338-1537) wt







pMIR-REP-dCMV-LRP1B 3' UTR (1338-1537) wt

