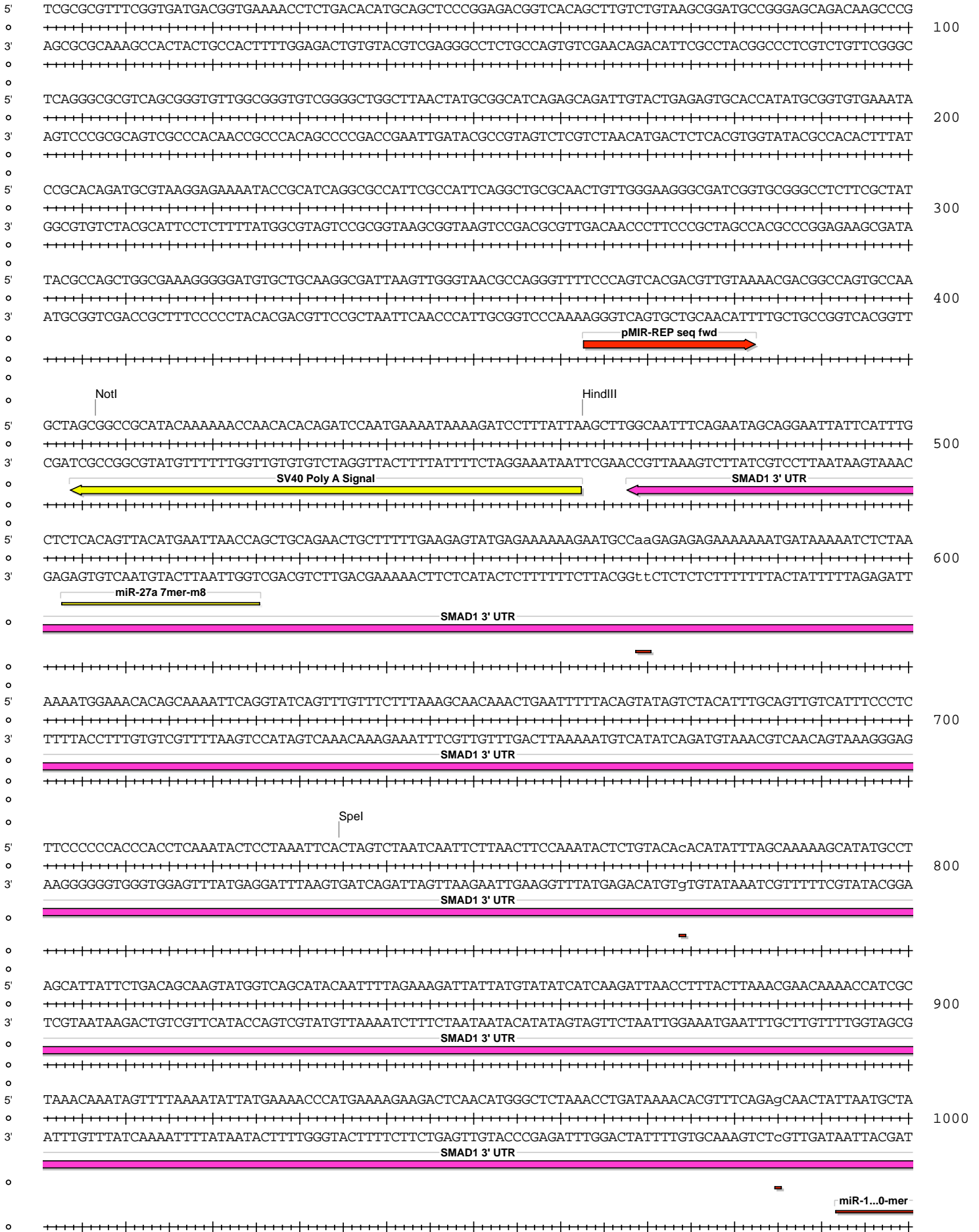
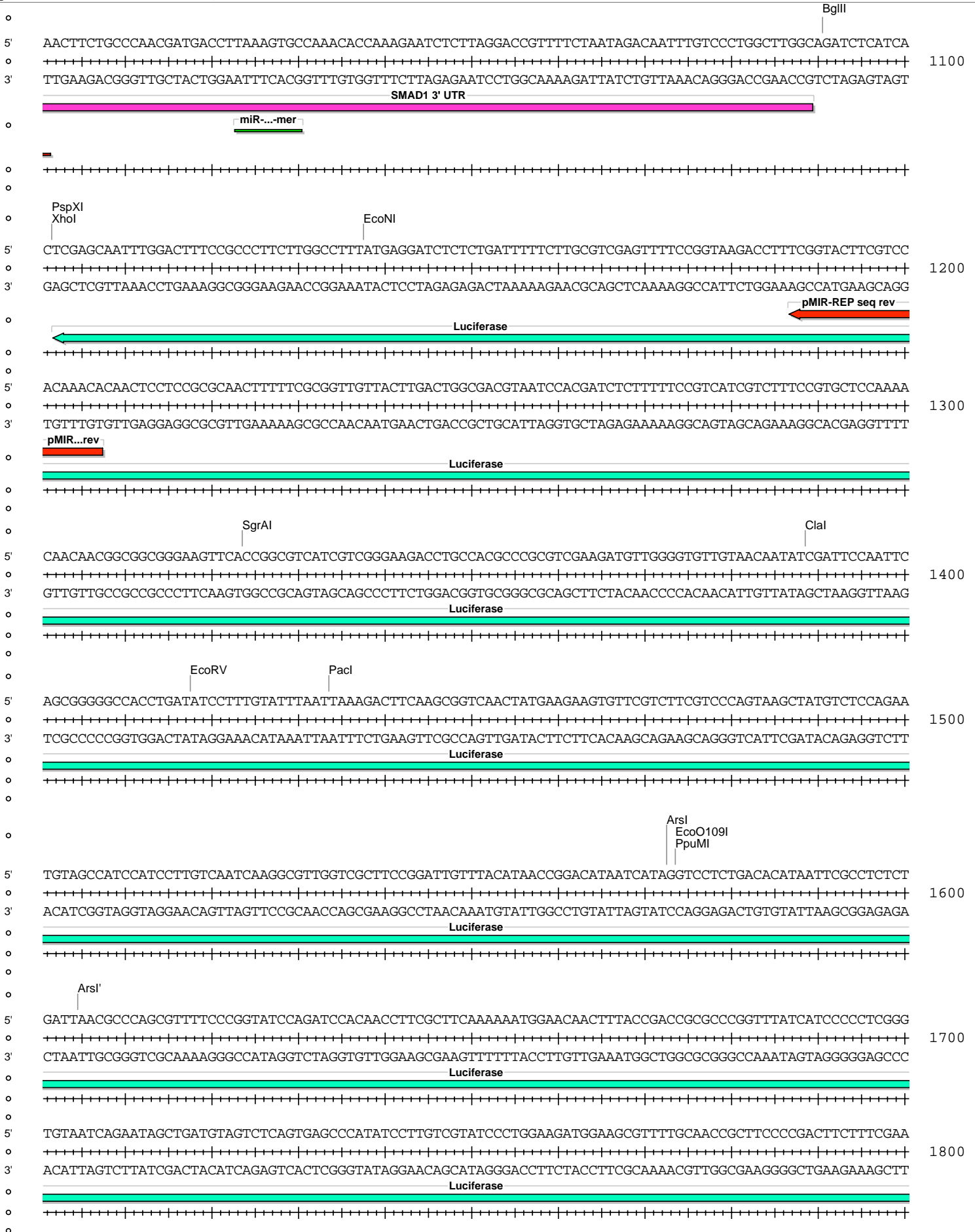


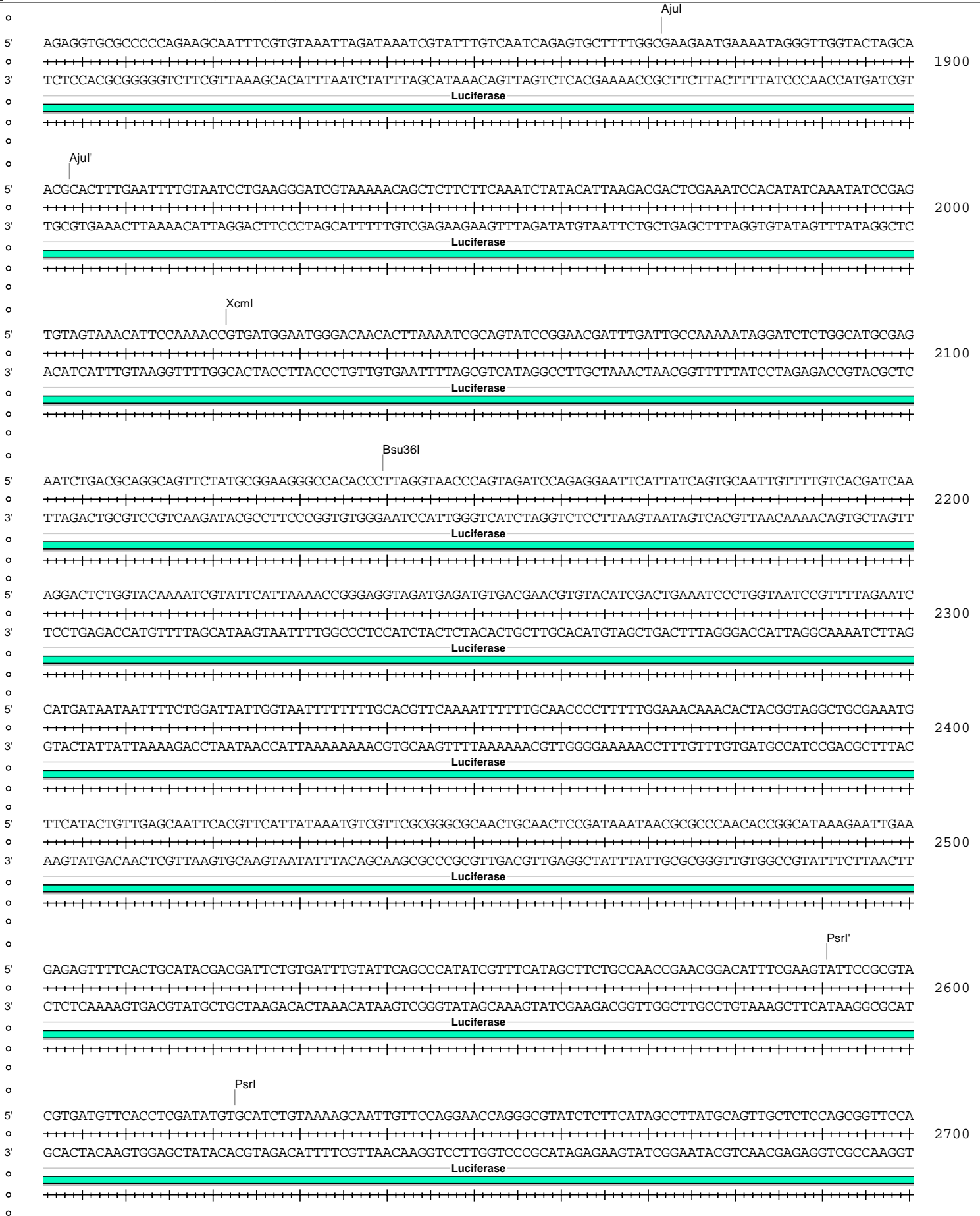
pMIR-REP-dCMV-SMAD1 3' UTR (288-907) wt

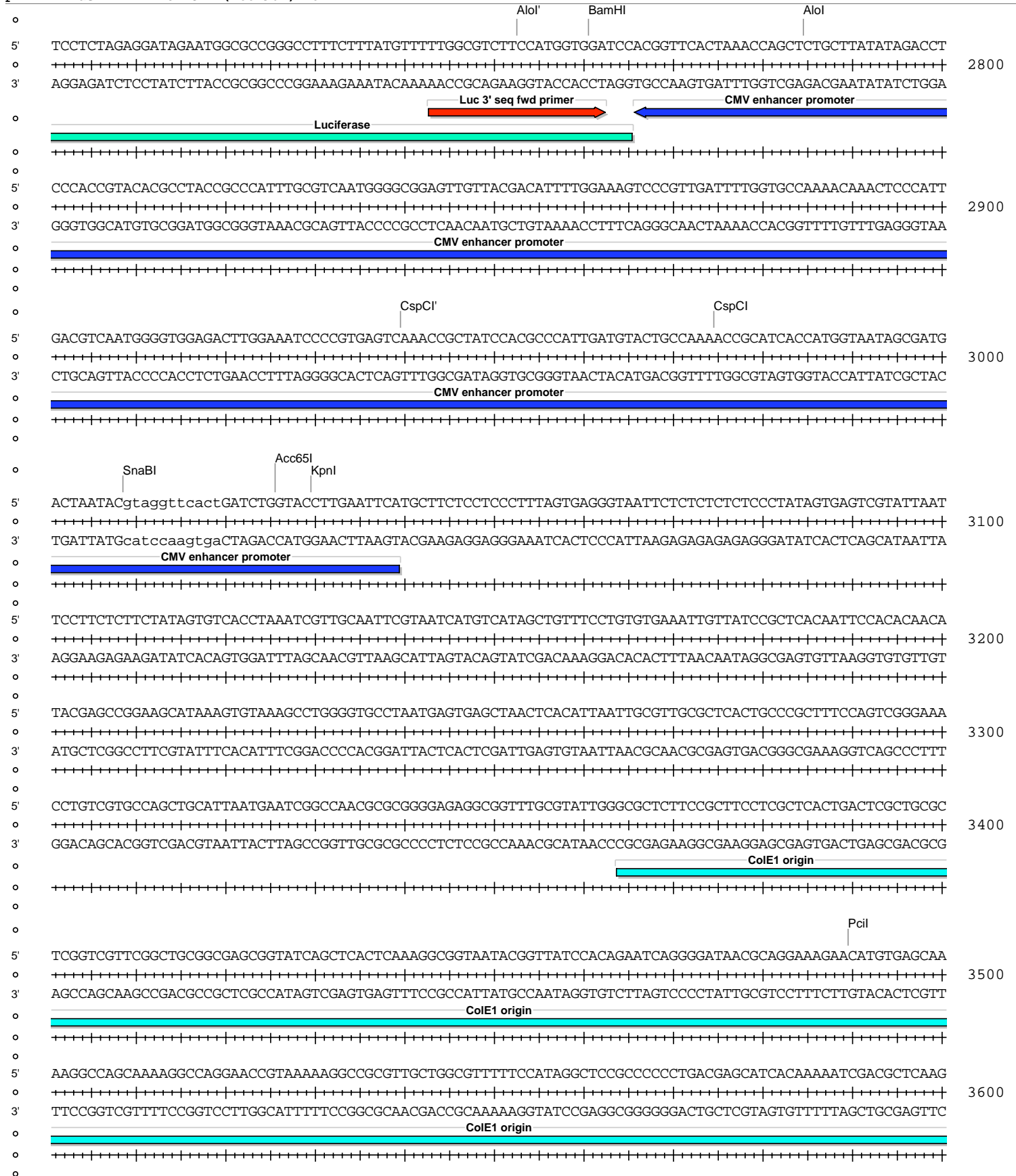
Absent Sites	0	AarI,AbstI,AfeI,AfIII,AleI,Apal,AscI,AsiSI,BaeI,BaeI',BarI,BarI',BbvCI,BclI,BlpI,BmgBI,Bpu10I,BsgI,BstXI,BstZ17I,EcoICRI,FseI,FspAI,MauBI,MluI,MreI,NaeI,NgoMIV,NruI,PasI,PfIMI,PmeI,PmlI,PshAI,PspOMI,SacI,SanDI,SgrDI,SrfI,Swal
Acc65I	1	3026 (6696)
AgeI	1	6329 (6696)
AjuI	1	1872 (6696)
AjuI'	1	1904 (6696)
Alol	1	2785 (6696)
Alol'	1	2753 (6696)
AlwNI	1	3906 (6696)
Arsl	1	1573 (6696)
Arsl'	1	1605 (6696)
AvrII	1	6380 (6696)
BamHI	1	2761 (6696)
BglII	1	1091 (6696)
BssHII	1	5813 (6696)
Bsu36I	1	2140 (6696)
Clal	1	1389 (6696)
CspCI	1	2975 (6696)
CspCI'	1	2940 (6696)
DraIII	1	5704 (6696)
EcoNI	1	1138 (6696)
EcoO109I	1	1574 (6696)
EcoRV	1	1418 (6696)
HindIII	1	463 (6696)
HpaI	1	5444 (6696)
KpnI	1	3030 (6696)
MscI	1	5897 (6696)
NotI	1	407 (6696)
PacI	1	1434 (6696)
PciI	1	3490 (6696)
PpuMI	1	1574 (6696)
PspXI	1	1102 (6696)
Psrl	1	2623 (6696)
Psrl'	1	2591 (6696)
RsrII	1	6153 (6696)
SacII	1	6060 (6696)
Sall	1	6160 (6696)
SbfI	1	6352 (6696)
Scal	1	4863 (6696)
SfiI	1	6434 (6696)
SgrAI	1	1324 (6696)
SnaBI	1	3009 (6696)
SpeI	1	735 (6696)
Tth111I	1	6229 (6696)
XcmI	1	2022 (6696)
XhoI	1	1102 (6696)
XmnI	1	4982 (6696)

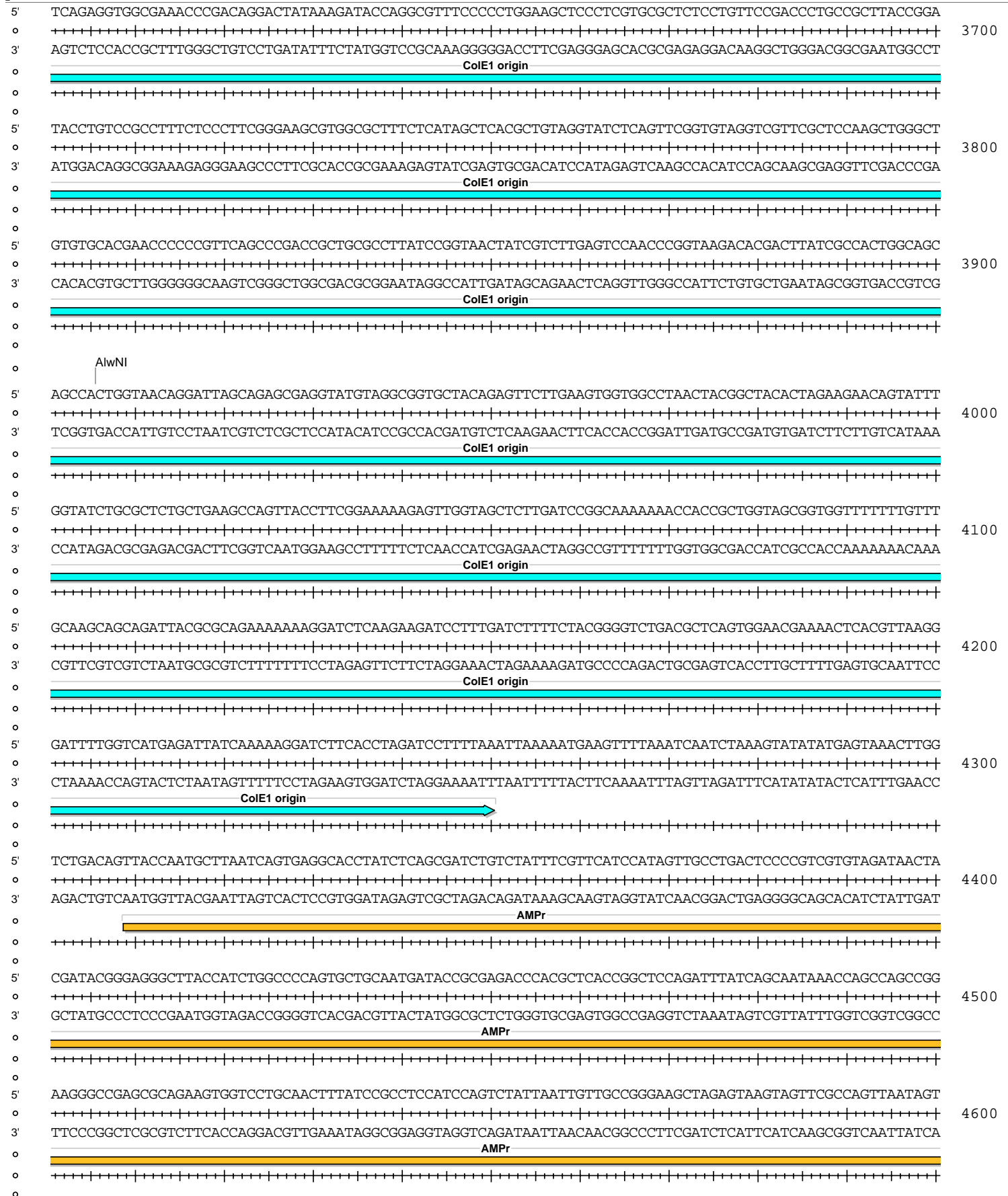
pMIR-REP-dCMV-SMAD1 3' UTR (288-907) wt











pMIR-REP-dCMV-SMAD1 3' UTR (288-907) wt



