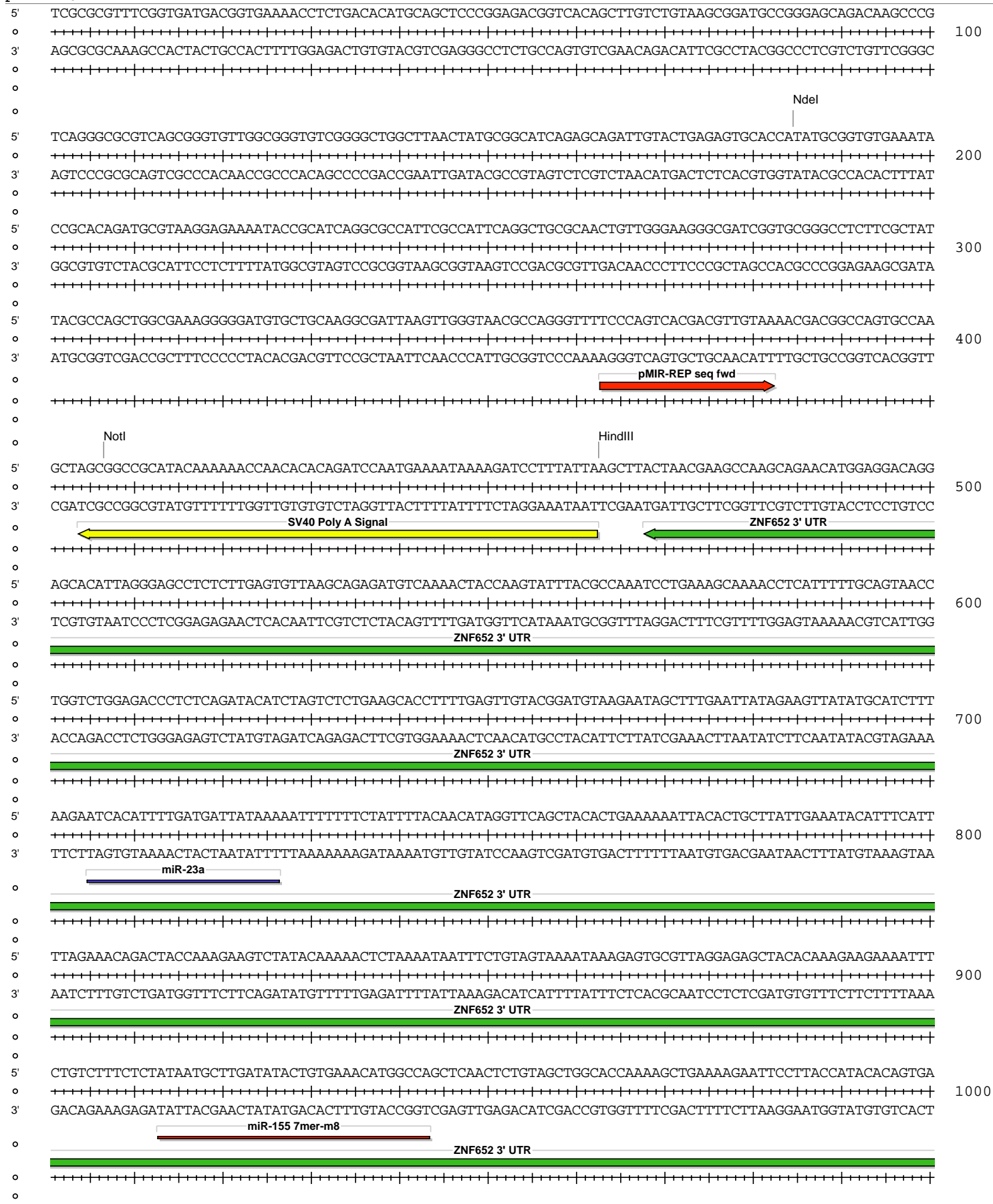


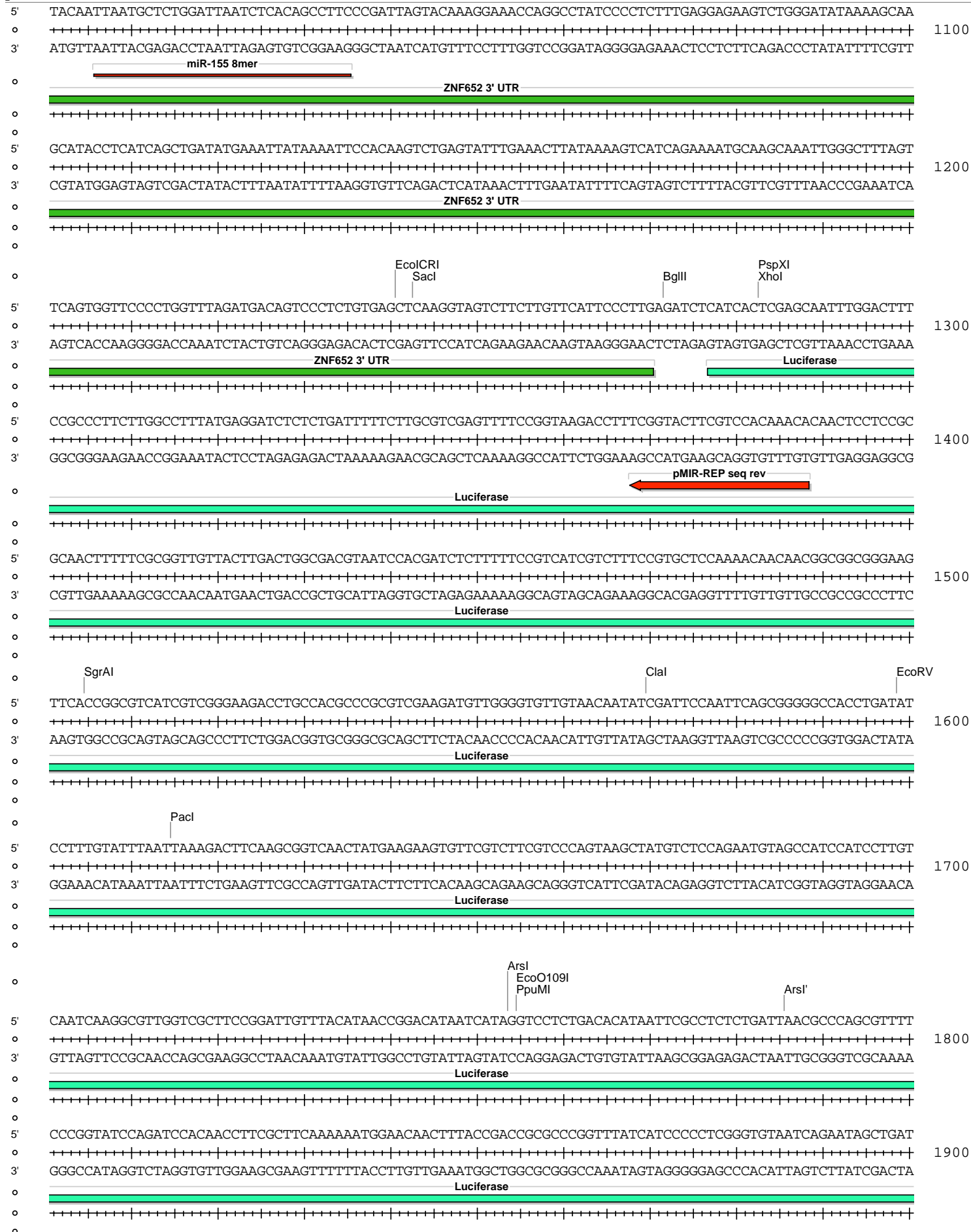
pMIR-REPORT

Absent Sites	0	AarI, AbsI, Afel, AfIII, AleI, ApaI, AscI, AsiSI, BaeI, BaeI', BarI, BarI', BbvCI, BclI, BlnI, BmgBI, Bpu10I, BsgI, BstXI, BstZ17I, FseI, FspAI, MauBI, MluI, MreI, NaeI, NgoMIV, NruI, PaeI, PfiMI, PmeI, PmlI, PshAI, PspOMI, SanDI, SgrDI, SpeI, SrfI, SvaI
Acc65I	1	3207 (6877)
AccI	1	6342 (6877)
AgeI	1	6510 (6877)
AhdI	1	4564 (6877)
AjuI	1	2053 (6877)
AjuI'	1	2085 (6877)
Alol	1	2966 (6877)
Alol'	1	2934 (6877)
AlwNI	1	4087 (6877)
ArsI	1	1754 (6877)
ArsI'	1	1786 (6877)
AvrII	1	6561 (6877)
BamHI	1	2942 (6877)
BglII	1	1272 (6877)
BsaBI	1	5726 (6877)
BsmI	1	5639 (6877)
BsrGI	1	2443 (6877)
BssHII	1	5994 (6877)
Bsu36I	1	2321 (6877)
BtgZI	1	3192 (6877)
ClaI	1	1570 (6877)
CspCI	1	3156 (6877)
CspCI'	1	3121 (6877)
DrallI	1	5885 (6877)
EcoICRI	1	1241 (6877)
EcoO109I	1	1755 (6877)
EcoRV	1	1599 (6877)
HindIII	1	463 (6877)
HpaI	1	5625 (6877)
KpnI	1	3211 (6877)
NdeI	1	185 (6877)
NotI	1	407 (6877)
PaeI	1	1615 (6877)
PciI	1	3671 (6877)
PpuMI	1	1755 (6877)
PspXI	1	1283 (6877)
Psrl	1	2804 (6877)
Psrl'	1	2772 (6877)
PstI	1	6533 (6877)
RsrII	1	6334 (6877)
SacI	1	1243 (6877)
SacII	1	6241 (6877)
Sall	1	6341 (6877)
SbfI	1	6533 (6877)
Scal	1	5044 (6877)
SfiI	1	6615 (6877)
SgrAI	1	1505 (6877)
SnaBI	1	3190 (6877)
SspI	1	5368 (6877)
Tth111I	1	6410 (6877)
XhoI	1	1283 (6877)
XmnI	1	5163 (6877)

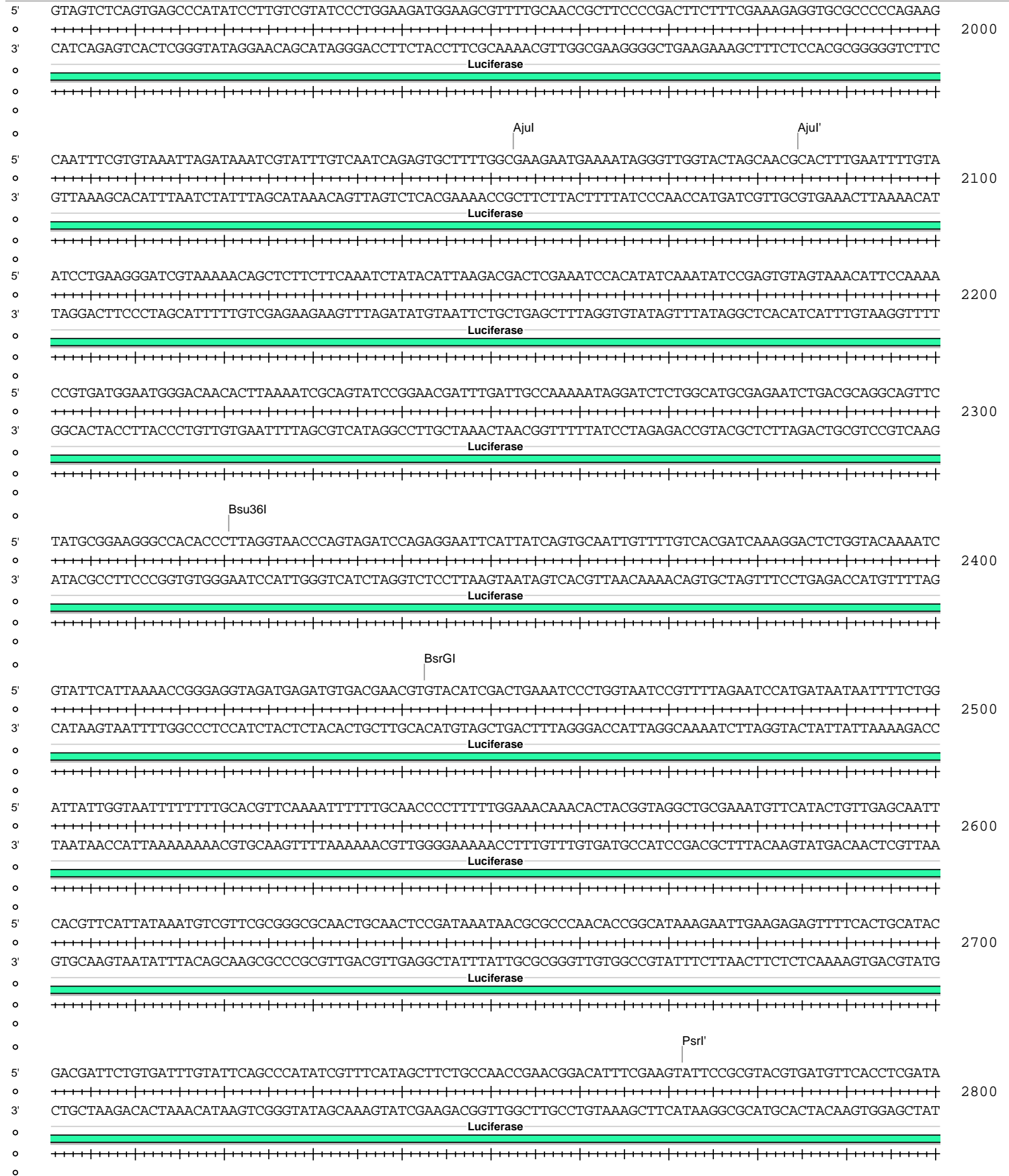
pMIR-REPORT



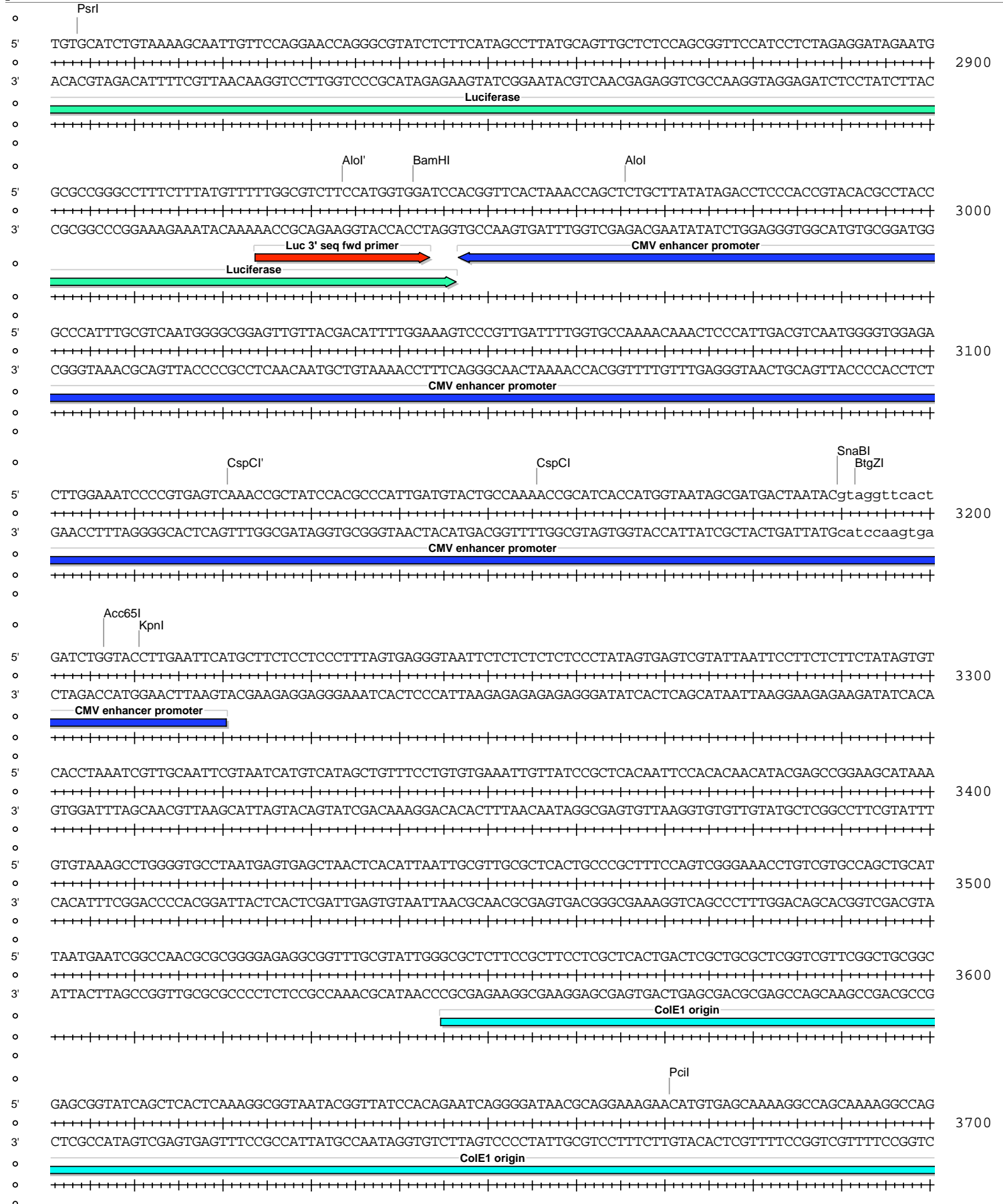
pMIR-REPORT



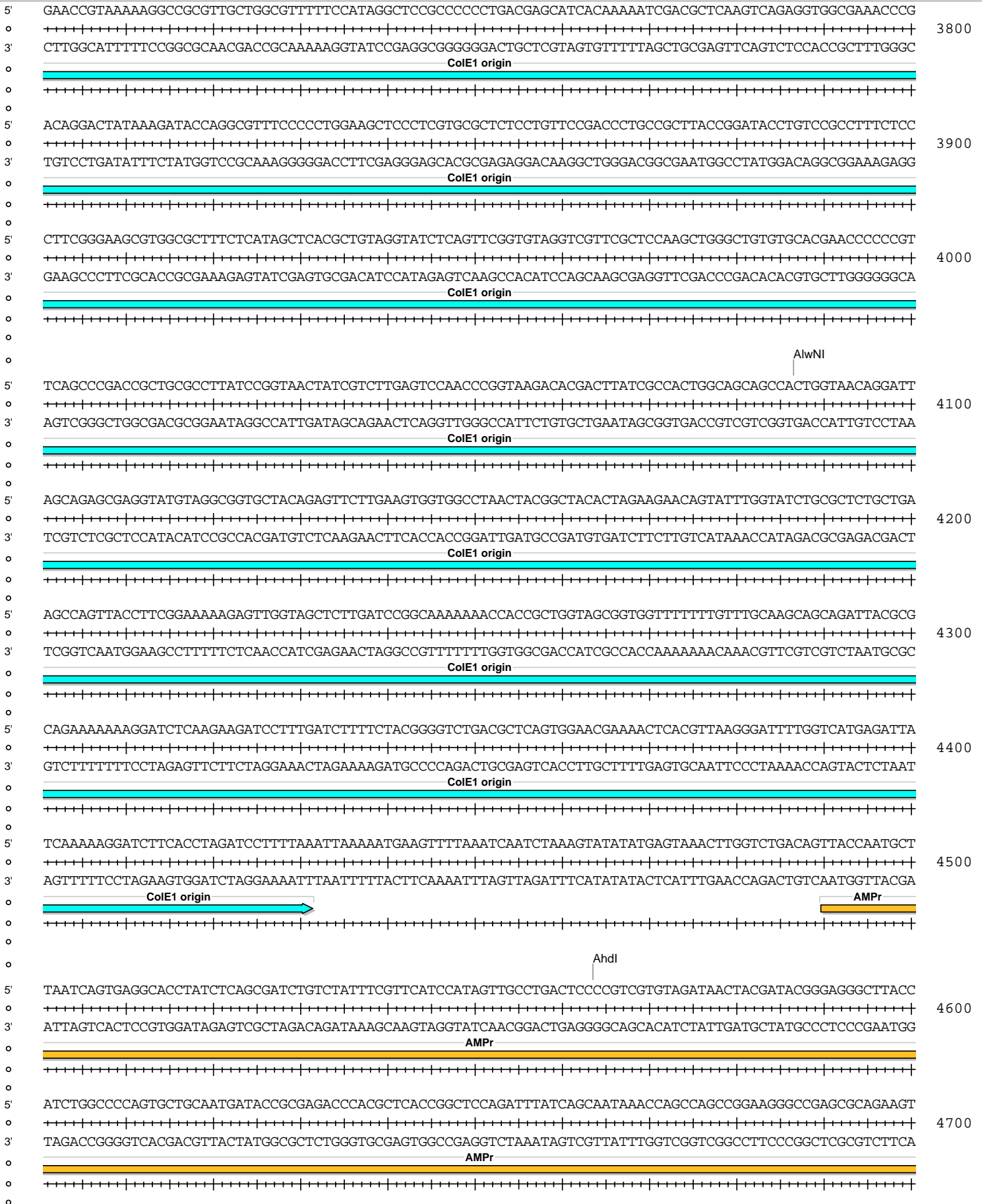
pMIR-REPORT



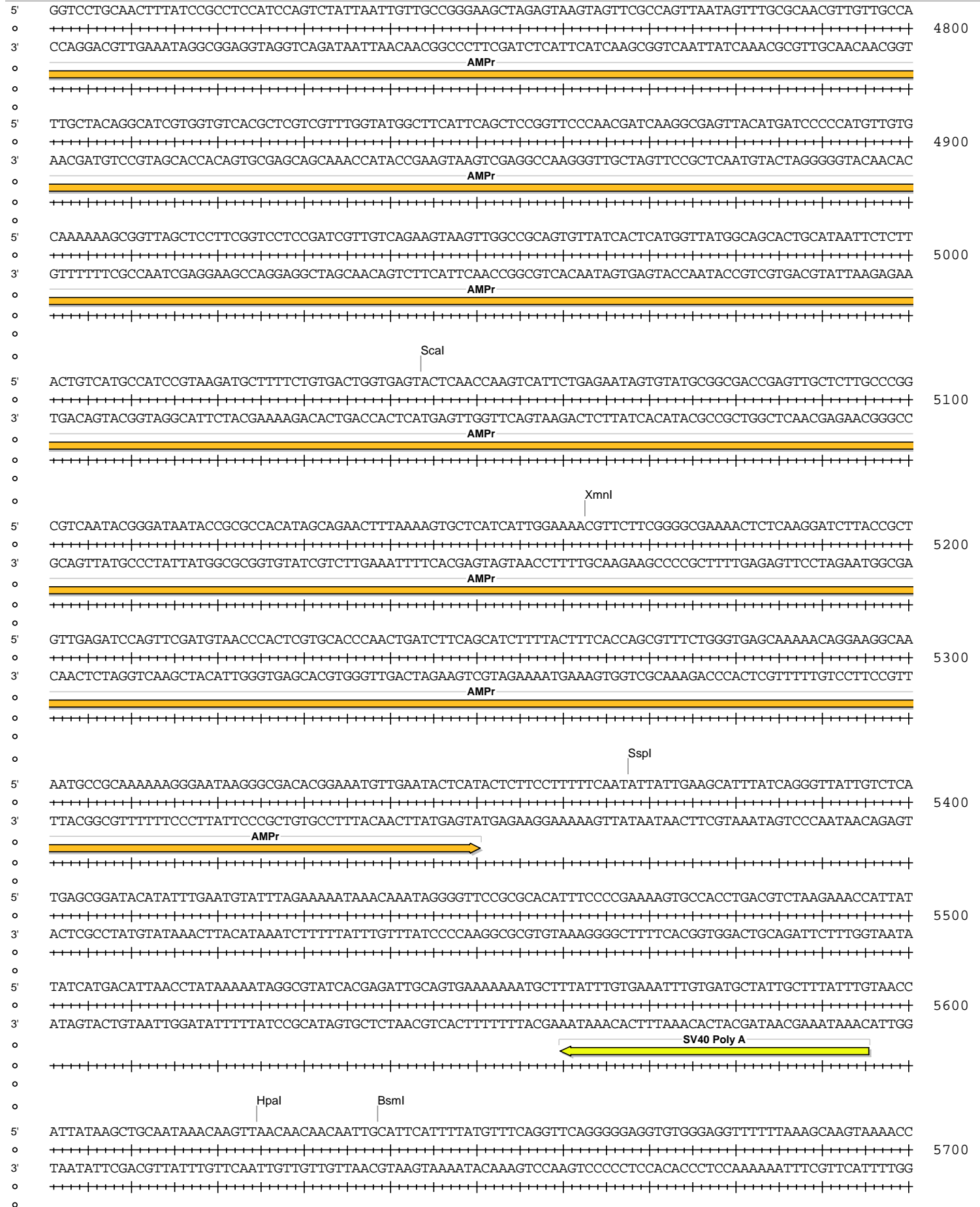
pMIR-REPORT



pMIR-REPORT



pMIR-REPORT



pMIR-REPORT



pMIR-REPORT

